

2014
ANNUAL
REPORT

Reflecting on Our History
and Looking to **the Future**



40th
The Marine
Mammal Center
Anniversary
1975 • 2015

Contents

- 1 Why **We** Rescue
- 2 **Celebrating 40 Years**
of Rescue, Research and Education
- 4 Reflecting on Our History
- 6 Rescuing Record Numbers
- 8 Recognizing **the Power of People**
- 10 Using New Technology
- 12 Heading into the Field
- 14 **Saving a Species** from Extinction
- 16 Expanding International Reach
- 18 Providing Hands-on Education
- 20 Sharing What We Learn
- 22 Looking to **the Future**
- 24 Our Donors
- 38 Board of Directors
- 39 Financial Summary



Why **We** Rescue

1

Our mission: To expand knowledge about marine mammals — their health and that of their ocean environment — and inspire their global conservation.

From its very beginning, The Marine Mammal Center has been an organization with animal welfare at its core. When our founding volunteers first began rescuing stranded sea lions, the effort was about easing suffering and lending a helping hand to animals in need.

This still rings true for us today—responding to suffering animals and providing them with life-saving care is the right and humane thing to do. But the reasons we rescue extend beyond that now, as we recognize that marine mammal health is closely connected to the health of our planet overall.

As much as this work is about giving each individual animal the care and attention it needs to return to the wild with a second chance, it is also about populations as a whole, the health of the ocean and even human health.

One sick sea lion won't tell you much. But thousands of sick sea lions rescued over the course of four decades have taught us a lot. Our scientists have discovered entirely new illnesses with relevance to human health issues.

And everything we've learned about marine mammals in our 40-year history has helped us become experts in how to care for species that are still at risk of extinction, such as the Hawaiian monk seal.

As we care for and diagnose our patients, we're not just learning about the specific diseases that affect marine mammals, we're also learning about the health of the ocean as a whole.

Marine mammals serve as sentinels of the sea, alerting us to the dangers they face. Rescuing these animals can help raise the alarm and inspire public action on human impacts like pollutants, ocean trash, overfishing and global warming.

The Marine Mammal Center is committed to going beyond rescue and research to provide education programming that also helps bring these issues to light.

We care about each animal that comes into our care, and we mourn the loss of those that we can't save. But in every interaction with every patient, we're providing compassion and care and advancing our collective ability to make a difference in profound ways.



Celebrating 40 Years of Rescue, Research and Education

2

Over the last 40 years, The Marine Mammal Center has rescued more than 20,000 animals. But our history is about so much more than statistics.



Our work is about people and teamwork, dedication and commitment. It's about science and research, and contributing to a greater understanding of our planet. It's about growing and learning, and teaching the next generation.

And most importantly, it's about you—our supporters—without whom none of this would be possible.

As we look to what's next for The Marine Mammal Center, we're looking beyond the individual patient to see the bigger picture. And we can see quite clearly that the world is changing.

From climate change to pollution to ocean trash, humans are having a devastating impact on marine mammals and on our ocean environment as a whole. It's part of the reason we feel so strongly about rescuing these animals,

but also why we feel it is so important to share what we learn from them—to raise awareness, to sound the alarm, to keep history from repeating itself.

40th
The Marine
Mammal Center
Anniversary
1975 • 2015



Now more than ever, we recognize that our next 40 years and beyond must be driven by our mission to inspire and empower a new generation of ocean stewards.



When our first California sea lion was rescued and released back in 1975, we didn't have internet access or portable x-ray machines or a state-of-the-art hospital facility. Now, we're able to use 21st century tools and technology to collaborate with scientists all over the world and get a better understanding of what's happening not just with individual patients but with populations and the environment as a whole.

By building on our 40-year history, we are able to combine decades' worth of data and expertise to collaborate on projects like a Marine Mammal Health Map, which would give researchers, policymakers and the public unprecedented insight into what's happening in our ocean. (Read more about this exciting project on page 22.)

Now more than ever, we recognize that our next 40 years and beyond must be driven by our mission to inspire and empower a new generation of ocean stewards.

With **great hope** for the future



Merrill L. Magowan

Merrill L. Magowan | Chair



Boehm

Dr. Jeff Boehm | Executive Director



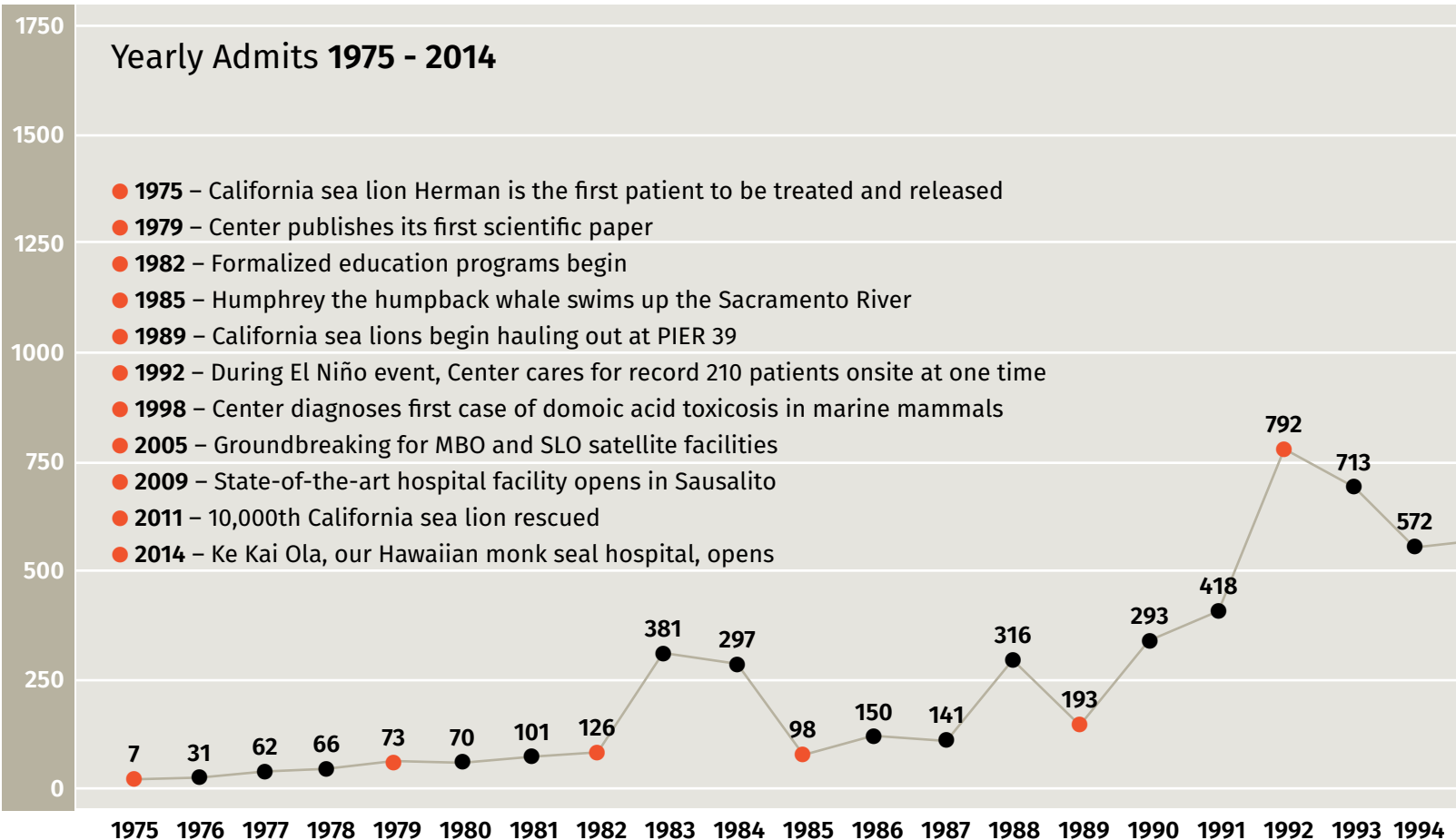
Reflecting on Our History

In 1975, Lloyd Smalley, Paul Maxwell and Pat Arrigoni established the California Marine Mammal Center on a former Nike missile site in the Marin Headlands, just north of the Golden Gate Bridge. A California sea lion named Herman was the first patient to be treated and released. Since then, we have responded to more than 20,000 marine mammals along the California coast.

The Marine Mammal Center's Founders

- Lloyd Smalley
- Pat Arrigoni
- Paul Maxwell

Over four decades, the Center has evolved into the world's largest rehabilitation hospital of its kind and an international leader in the field of marine mammal science.

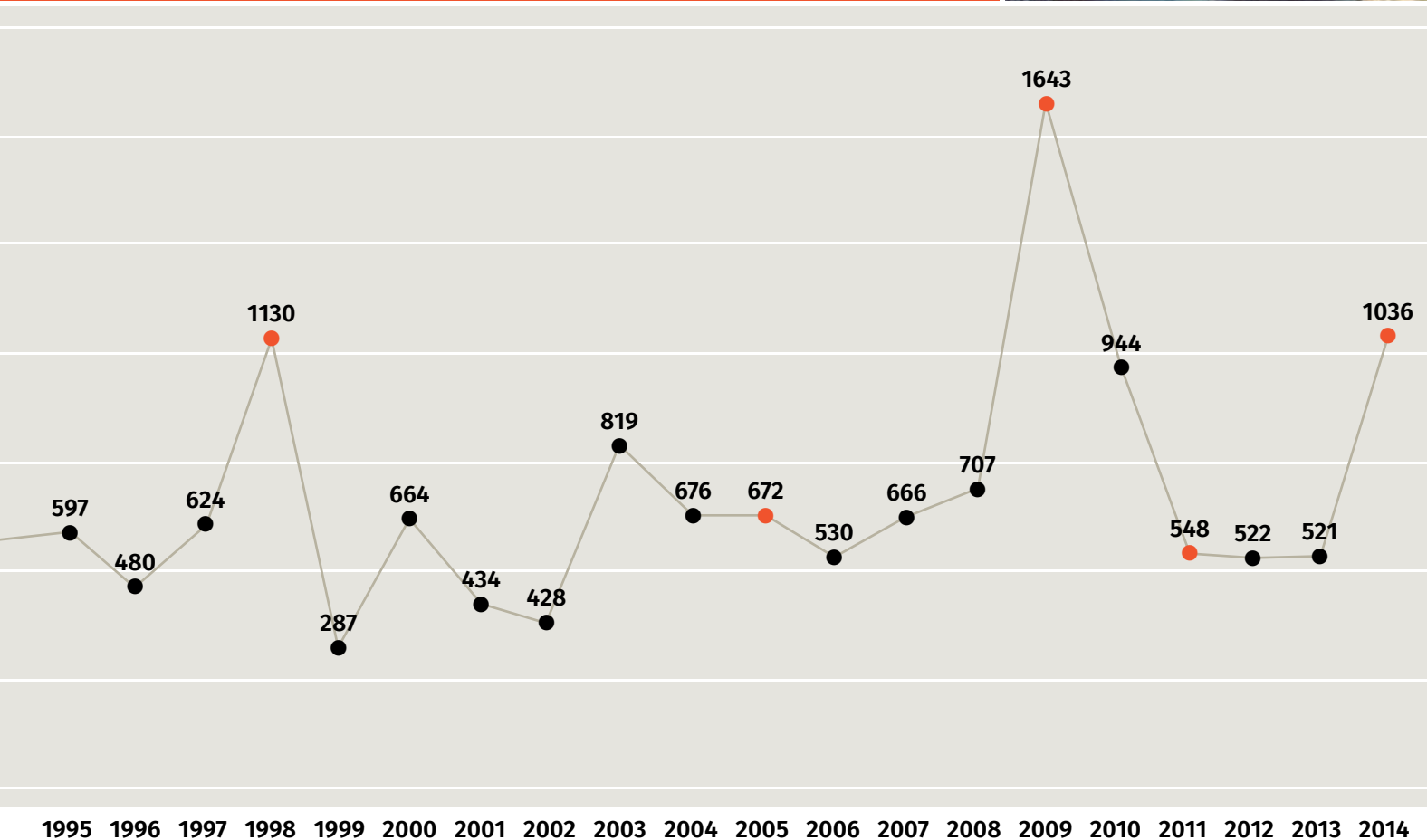


Executive Directors

- Lloyd Smalley (1975-1982)
- Bill Keener (1982)
- Peigin Barrett (1982-1996)
- Margaret "Peggy" Burks (1997-2000)
- B.J. Griffin (2000-2007)
- Martha Whetstone (2007-2008)
- Jeff Boehm (2008-present)

Founding Board of Directors

- Lloyd Smalley (President and Founder)
- Paul Paulbitski (Vice President)
- Robert Bottini (Associate Director)
- Bruce Keegan (Secretary-Treasurer)
- Edward Rojas (Legal Consultant)



Rescuing Record Numbers

An influx of young sea lions early in 2014 pushed us into our busiest pupping season to date—with more animals admitted over the course of the first four months of the year than we had ever seen previously.

An Epic Year

In 2014, we rescued our 11,000th California sea lion, an emaciated young pup named Epic. While Epic's rescue represented a special milestone in our history, his condition, unfortunately, was not unique. Over the last several years, we have seen an unusually high number of starving young sea lions. And in 2014, those animals came in just as we were reaching peak elephant seal and harbor seal pup season.

Hoppie Helps Highlight a Crisis

As our patient counts began to increase, one pup in particular became quite the media darling. California sea lion Hoppie swam up the San Joaquin River and into the hearts of America. Found in an almond orchard near Modesto, California, more than 100 miles from the coast, Hoppie and his unusual story caught the attention of reporters across the country. After five weeks of treatment for malnourishment and pneumonia, his return to the wild was documented by local media.



- Our record-breaking pupping season—and the plight of the California sea lions at the center of it—drew attention from media outlets across the country.



San Francisco Chronicle

TIME



In 2004, California sea lion Chippy made headlines when he swam up the San Joaquin River and climbed atop a police cruiser.

2014: The Year in Numbers

Animals Rescued:

California sea lions: 711

Elephant seals: 179

Harbor seals: 61

Cetaceans: 36

Northern fur seals: 28 | *Third highest number of northern fur seals rescued in one year*

Hawaiian monk seals: 6 | *Read more about our first four Hawaiian monk seal patients on pages 14-15*

Sea otters: 6

Guadalupe fur seals: 4

Sea turtles: 3

Steller sea lions: 2

Total: 1,036

Rescues by Region: More than 75% of our rescues arrived at our satellite facilities

Bay Area and Northern California: 218

Monterey and Santa Cruz: 320

San Luis Obispo and Santa Barbara: 485

Other: 13

Reasons that Patients Required Our Care:

Malnutrition: 620

Domoic acid toxicosis: 244 | *Read more about this outbreak on pages 20-21*

Trauma: 221

Oil/tar: 35

Fisheries-related impacts (fish hooks, netting, fishing line, etc.): 34

Otostongylus (lungworm): 34

Harassed/unauthorized pickup: 27

Cancer: 24

Gunshot: 15

Patients Released Back into the Wild: 515

THE WALL STREET JOURNAL.



ALJAZEERA AMERICA

CBS NEWS



Recognizing the Power of People

8

Throughout our 40-year history, one thing hasn't changed: It is the power of people that makes our life-saving work possible.

Dedicated staff and volunteers, some of whom have served for decades, are at the heart of this organization. But we also count on others, such as our valued industry partners and the veterinary science professionals who have stepped in during emergencies to lend a hand.

A Record-Breaking Year Requires Record-Breaking Support

During a year in which we rescued more than 1,000 animals—nearly twice our yearly average—it should be no surprise that our volunteers stepped up to give record-breaking support. In 2014, we recorded 136,866 volunteer hours served—the second highest in our 40-year history (a workforce value of \$3.6 million).



Volunteers Who Have Served 25+ Years

- **Bob Wilson**, since March 1976
- **Carol Stewart**, since March 1978
- **Arthur Taber**, since November 1980
- **Stephanie Behasa**, since August 1983
- **Joanne Handley**, since September 1985
- **Carolyn Fremgen**, since May 1986
- **Marie Kazan-Komarek**, since May 1987
- **Jane Hansen**, since June 1989
- **Esther Rasmussen**, (1983-2010)
- **Vi Brown**, (1986-2012)
- **Margery (Jerry) Mecabe**, (1989-2014)

Volunteers by the Numbers

Active volunteers: 1,091
Volunteers based in Fort Bragg/Anchor Bay: 54
Volunteers based in Monterey Bay: 84
Volunteers based in San Luis Obispo: 79
Volunteers based at Ke Kai Ola (Hawaii): 30
Total volunteer hours: 136,866



a workforce value of \$3.6 million



In 1983, volunteer night crews were established for the first time at the Center.



Help in the Fish Kitchen

Due to the record-high patient load early in 2014, we launched an urgent-need volunteer campaign that formalized an animal care role requiring little training: Fish Kitchen Support. These volunteers assisted with daily tasks such as dishwashing, kitchen cleaning, fish sorting and food prep, allowing veteran volunteers to spend more time in the pens providing patient care. By the end of the busy season, 128 Fish Kitchen Support Volunteers had given 2,164 hours of their time to support our animal care crews. Some of these volunteers continued their service by taking our training classes and joining a crew.

In-Depth Diagnostics

While the Center is a full-service hospital staffed with veterinary experts who perform surgeries, take x-rays and run blood work, sometimes our patients require special diagnostic tests or procedures that require additional expertise or equipment. When that happens, we call on a community of experts willing to lend a hand. In the case of one particularly difficult-to-diagnose harbor seal patient, we went to Animal Eye Care in Fremont, California, for an eye exam and electroretinogram (ERG); visited Animal Scan in Redwood City, California, for magnetic resonance imaging (MRI); and consulted with the veterinary neurology team at UC Davis.

The Power of Partnerships

Our work would not be possible without the support of partners like these:

- National Oceanic and Atmospheric Administration (NOAA)
- National Park Service/Golden Gate National Recreation Area
- Oiled Wildlife Care Network
- Golden Gate Cetacean Research
- Association of Zoos and Aquariums
- International Zoo Educators Association
- California Academy of Sciences
- UC Davis School of Veterinary Medicine



Using New Technology

10

Although our primary mission to rescue and care for stranded marine mammals hasn't changed much in 40 years, the tools we use to do that work have evolved over time. From developing innovative rescue techniques to utilizing state-of-the-art diagnostic tools, our marine mammal experts are using cutting-edge technology to ensure that every patient has the very best chance of survival.

Acoustic Darts Can Track Entangled Patients

Dr. Greg Frankfurter, our 2014 Koret Foundation Veterinary Intern, and Dr. Shawn Johnson, Director of Veterinary Science, developed an acoustic dart for use during difficult rescues. About the size of a pencil, the dart emits a sonic ping that can be tracked with an underwater receiver, helping the Special Rescue Operations team locate animals that try to evade rescue by diving into the water. This acoustic darting technique was used in the rescue of 10 entangled patients in 2014.

Portable Digital X-Ray Machine Diagnoses on the Beach

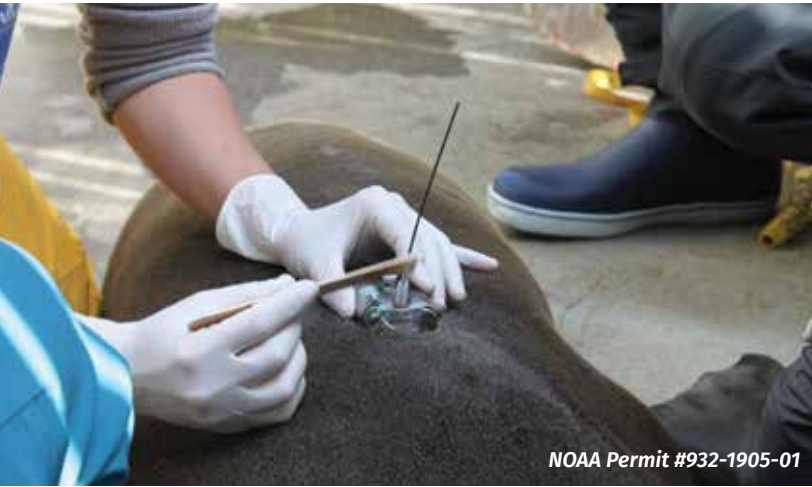
One of the threats facing the critically endangered Hawaiian monk seal is accidental ingestion of fishing hooks, a potentially fatal mistake for a hungry seal. But thanks to a generous gift by Falko Partners and the Bowman Family Foundation, our veterinary experts in Hawaii can now make this diagnosis on the beach using a Vet Rocket portable X-ray machine. This rugged, battery-powered device reduces the need for handling and transporting animals unnecessarily. If a fishing hook is detected, the ailing seal can be rushed to The Marine Mammal Center's new Ke Kai Ola facility for surgery.



In 1997, the Water Rescue Team (later renamed Special Rescue Operations) was formed to rescue animals that have life-threatening injuries caused by direct human interaction.



In 1981, veterinarians at the Center performed the first successful cataract surgery on an elephant seal, a patient named Behemoth.



NOAA Permit #932-1905-01



NOAA Permit #932-1905-01



Satellite Tag Allows Scientists to Follow Threatened Species

Little is known about the rare and elusive Guadalupe fur seal, so when an adult female was successfully rehabilitated at the Center in 2014, our researchers sent her back to sea with a satellite tag. Smaller than a deck of cards, the tag monitored location and diving behavior as Sterling Archer traveled west to an area of the Pacific Ocean known to be a favorite feeding ground of large marine animals. It was the first time this behavior had been documented in Guadalupe fur seals, an important insight that could lead to better protections for this threatened species.

Surgery and Special Care Helps Restore Elephant Seal's Vision

Northern elephant seal Solar was admitted to The Marine Mammal Center with cataracts in both eyes, rendering him completely blind. After a successful surgery during which Dr. Patricia Smith of Animal Eye Care used sound waves to break down the cataracts, Solar needed extra care to ensure his eyes healed properly. Using specialized catheter tubes inserted directly into his eyes, our veterinary experts were able to give Solar the eye drops he needed four times a day. After five months of care, he was released back into the wild.



Heading into the Field

12

Our Stranding staff and volunteers are sent out on thousands of marine mammal assessments, rescues and releases every year, but many of our other experts also head into the field to monitor populations, study large whales and bring our educational programming directly to the classroom.



Making the Most of a Minke Whale

When a young adult minke whale stranded at Jug Handle State Reserve 150 miles north of our Sausalito facility, our experts rushed to the scene. The 16-foot female provided an opportunity to learn more about why the animal died and collect samples for further study. A necropsy revealed that she had likely been entangled in fishing gear and trying to free herself had caused internal trauma. This whale's death is a reminder of the very real impacts humans can have on marine mammals—but her legacy lives on: Skin and tissue samples taken at the scene will help researchers learn more about marine mammal health, while her skull will soon be integrated into educational programming at the Center.





In 1998, the Center sent the “Whale Bus” out for its first marine science outreach program.



Field Research on the Channel Islands

In September 2014, veterinary staff from the Center joined researchers from NOAA’s National Marine Mammal Laboratory on a research trip to the Channel Islands, a primary breeding area for California sea lions. The field teams weighed, tagged and took samples from sea lion pups born just three months prior to assess the overall population. By comparing their data with historical records, they determined that nearly 20 percent of the pups were below average weight—an indication that changing environmental conditions may be affecting these animals.

Bringing the Sea to School

Our Sea to School outreach program brings learning directly to the classroom, thanks to generous support from PG&E, Oracle and the DMARLOU Foundation. Presentations include hands-on activities and exploration of specimens, teaching students about the lives of marine mammals, our work at the hospital and marine conservation. In 2014, we began the rollout of a new design for our fleet of outreach vehicles. Designed by our pro-bono partners at Swirl, our first vehicle in the series, the “Explorer,” features a submarine periscope, a propeller that blows bubbles and a multimedia porthole.

Saving a Species from Extinction

For more than a decade, The Marine Mammal Center has worked closely with colleagues in Hawaii to provide medical care to critically endangered Hawaiian monk seals. In 2014, we took that work to the next level by opening the doors of **Ke Kai Ola, our Hawaiian monk seal hospital.**

Grand Opening Celebration and Blessing

On September 2, 2014, Kumu Danny Akaka, Jr., led a celebratory crowd in a traditional Hawaiian blessing ceremony before officially opening Ke Kai Ola (The Healing Sea). Guests at the Grand Opening celebration included supporters and partners from across the country, volunteers, community members and local government officials, as well as all three of the Center's original founders—Lloyd Smalley, Paul Maxwell and Pat Arrigoni. The celebration began at Ke Kai Ola and continued into the evening at a reception hosted by the Four Seasons Resort Hualalai in Kona, Hawaii.



© Heather White Images

© Koa Matsuoka, NOAA Permit #932-1905-01/MA-009526-1

Ke Kai Ola Highlights

Our \$3.2 million facility on the Big Island of Hawaii was built specifically to care for the critically endangered Hawaiian monk seal. Located on a bed of lava rock next to the ocean, the hospital includes two pens and pools for monk seal pups and two larger pools for juvenile seals, as well as a medical lab, offices, food prep kitchen and education pavilion. **Thanks to funding from the Firedoll Foundation as well as a generous family foundation and donors throughout the world, Ke Kai Ola can now assist in the effort to save a species from extinction.**





In 2012, veterinary experts from the Center helped perform the first-known tongue surgery on a Hawaiian monk seal to repair damage from a fishing hook. The animal, known as Honey Girl, was spotted in early 2014 with a healthy pup.



© Heather White Images



NOAA Permit #16632-00



Our \$3.2 million facility on the Big Island of Hawaii was built specifically to care for the critically endangered Hawaiian monk seal.



Deb Wickham, Operations Manager at Ke Kai Ola, has been named the “unofficial pinniped matriarch” of West Hawaii by local media.
NOAA Permit #16632-00

Ke Kai Ola's First Patients

Our first Hawaiian monk seal patients were admitted to Ke Kai Ola in early July 2014—two months before the hospital was scheduled to officially open. Our vital pens, pools and water systems were already in place, so we opened our doors to four young, malnourished monk seals rescued from the Northwestern Hawaiian Islands. After seven weeks of rehabilitation at our brand-new facility, these seals were healthy enough to return to their home.

Bringing a Community Together

From the very beginning, our work in Hawaii has been about more than building a hospital. The name Ke Kai Ola (The Healing Sea) was chosen for this facility because it will be a place of great healing not just for seals but also for humans, as they gather to care for and learn about this native Hawaiian species. Our staff and volunteers are now leading outreach programs at Ke Kai Ola as well as throughout the community to raise awareness about the monk seal's plight.



Expanding International Reach

Though our primary rescue range is limited to the California coast, we recognize the global nature of our ocean and the impacts we can have on it. By sharing our expertise with international veterinary professionals and collaborating with partners to **raise awareness** about global issues such as climate change and the plight of the endangered vaquita, we aim to inspire conservation on an international scale.

The International Veterinary In-Residence Program

In 2014, The Marine Mammal Center launched an innovative program aimed at giving marine mammal veterinarians the tools they need to develop rescue and rehabilitation programs in countries that lack them. As a teaching hospital with more than 200 patients on-site during our busy season, the Center is able to provide these residents with training and hands-on experience with wild marine mammals as well as extensive necropsy and pathology work.



Dr. Josefina Gutiérrez (Chile)



Dr. Mauricio Ulloa Encina (Chile)



In 1993, the International Program for Marine Mammal Health was founded at the Center. Its goal was to collect baseline data to contribute to the worldwide understanding of the role of health and disease in marine mammal populations.

International Veterinary In-Residence Program Alumni | Class of 2014

Dr. Mauricio Ulloa Encina (Chile) – Following his residency, Dr. Encina returned to his role as Chief of the Aquatic Animal Rescue and Conservation Unit within the National Fisheries and Aquaculture Service of Chile ready to train his staff of more than 30 veterinarians in advanced necropsy, medical and response techniques.

Dr. Josefina Gutiérrez (Chile) – During her residency, Dr. Gutiérrez worked on a clinical research project developing nerve blocks in California sea lions in order to help evaluate pinnipeds with eye disease.



© Tom Jefferson

Uniting to Save the Vaquita

The vaquita is the world's most endangered marine mammal, and with fewer than 100 individuals believed to be alive today, it could be extinct by 2018. The vaquita's remaining habitat is a small area in the northern Gulf of California in Mexico. While this is outside the rescue range of The Marine Mammal Center, we have been working closely with a coalition of international government agencies and advocacy groups to draw attention to the plight of this animal and try to reverse its fate.



Putting a Spotlight on Climate Change

As a member of both the National Network of Ocean and Climate Change Interpretation and the Bay Area Climate Literacy Collaborative, we're working with more than 100 like-minded organizations to raise awareness about this important global issue. In early 2014, Adam Ratner, a key member of our Education team, was selected as one of 26 Community Climate Change Fellows to take part in a pilot program aimed at engaging communities on the topic of climate change. Over the course of four months, the Center conducted trainings with 45 education volunteers, and the results were shared at the National Association of Environmental Education conference. The successful program has expanded to include additional trainings and communication techniques.



Providing Hands-on Education

Within a year of opening The Marine Mammal Center to patients, our doors were opened to local schoolchildren—and education has been part of our core mission ever since.

We know that hands-on experiences provide for memorable learning opportunities, so we aim to engage every visitor—whether they are young students, veterinarians in training or storytellers who can share these experiences with a broad audience.



Ocean Ambassadors

In 2014, we piloted a new, year-round marine science education program tailored to meet the unique needs of middle school students. Ocean Ambassadors provides participating teachers with a 10-lesson curriculum guide, instructional videos, field trips, teaching tools and ongoing support to enhance science learning. Students in the program also research, develop and then present their own marine conservation “call to action” project. Thanks to major support from the community, Ocean Ambassadors allows us to reach students at a formative time in their lives and ensure that they become the next generation of informed scientists and engaged citizens who will care for and ensure the health of our ocean and environment.



In 1976, schoolchildren visited the Center for the first time.



Hands-on Training for Visiting Veterinary Professionals

As a vital training ground for veterinary professionals from around the world, The Marine Mammal Center truly is a teaching hospital. In 2014, we hosted 26 visiting students and researchers interested in learning from our world-class team of experts. Coming to us at all stages of their career—from residents to externs to veterinarians seeking specialty experience—these visitors typically stay at least four weeks to learn everything from basic pinned handling skills to the intricacies of marine mammal necropsy and pathology.



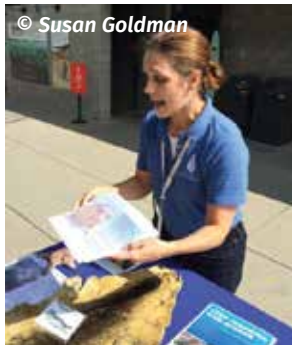
Since 2006, Dawn has donated more than \$4 million to its wildlife partners, The Marine Mammal Center and International Bird Rescue, as part of its Dawn Saves Wildlife Campaign.

Visitors and Education:

Visitors to the Center's Sausalito hospital: 66,693

Students served on-site and through outreach programs: 51,125

Total number of people engaged in education and outreach programming: 117,818 (up 17% from 2013)



© Susan Goldman



© Susan Goldman



© Susan Goldman



© Susan Goldman

Learning in the Lab

The Marine Mammal Center is committed to providing engaging programming for student field trips that support Next Generation Science Standards.

Our interactive onsite programs and guided tours for grades K-12 focus on the Center's mission and work, including topics such as what we feed our patients and how we diagnose diseases.

Bloggers Become Volunteers for a Day

With the help of our partners at Procter & Gamble and Dawn dish soap, we invited 11 influential bloggers to experience what it's like to be a volunteer at the Center. Each blogger was paired with a volunteer who was helping care for the animals, educate the public or run samples in the lab. The bloggers also took turns volunteering themselves—cleaning dishes, sorting fish or washing rescue vehicles. Throughout the day, they documented their experiences through words, pictures and video. Within one week, they had generated more than 9.2 million impressions—helping share our work with audiences across the country.



Sharing What We Learn

20

Every animal we rescue has the potential to help us learn more about marine mammal health, human health and the overall health of our ocean.

By sharing what we learn with students and other visitors to the Center, the wider scientific community and even public health officials, we are able to create a ripple effect with every diagnosis and discovery.



California Sea Lions as Sentinels for Human Health

In 2014, more than one-third of the California sea lions we rescued were affected by a toxin called domoic acid that is produced by harmful algal blooms and accumulates in small fish. Since discovering this condition in marine mammals in 1998, we have learned that when sea lions eat the affected fish, the toxin attacks the brain, causing seizures and other abnormal behavior. Domoic acid can also affect humans who eat contaminated shellfish, resulting in a life-threatening condition called amnesiac shellfish poisoning. Because sea lions are often the first to be affected when a toxic algal bloom occurs, we alert the public health department as soon as we see a cluster of affected animals that could indicate an outbreak. The data we provide them about where and when affected sea lions are found can help them better target their surveillance to protect human health.





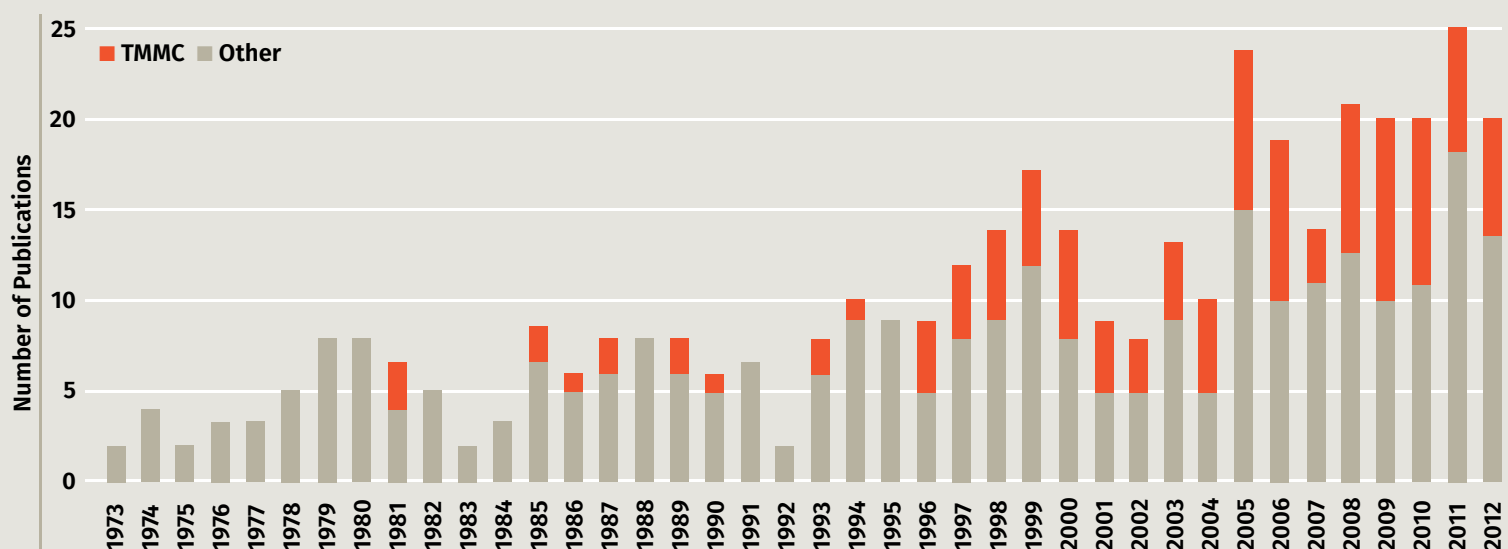
In 2014, researchers at the Center discovered that Guadalupe fur seals, a threatened species, are also vulnerable to domoic acid toxicosis.



Using Animation to Educate

Sharing important messages about marine mammal health isn't always easy—especially when the concepts behind the messages are complex. That's why we partnered with the California College of the Arts in 2014 to create an animated short film about domoic acid toxicosis in California sea lions. Using animation allowed us to effectively convey the cause and impact of this serious disease, while making the topic accessible and engaging to a wide audience. The film is available online and is used during our on-site education programming. A follow-up project is planned to create a new film that explores the impacts of climate change on marine mammals, thanks to a grant from the California Coastal Commission Whale Tail Program.

The Center's Contribution to Marine Mammal Health Literature | 1973-2012



Sharing with the Scientific Community

The Center's first scientific paper was published in 1979, just four years after the organization was founded. Since then, our experts have continued to document and share their findings in order to advance marine mammal science and the study of ocean health. In 2014, scientists at The Marine Mammal Center contributed 14 research papers to peer-reviewed journals and gave more than 25 presentations at conferences from Southern California to the Gold Coast of Australia.

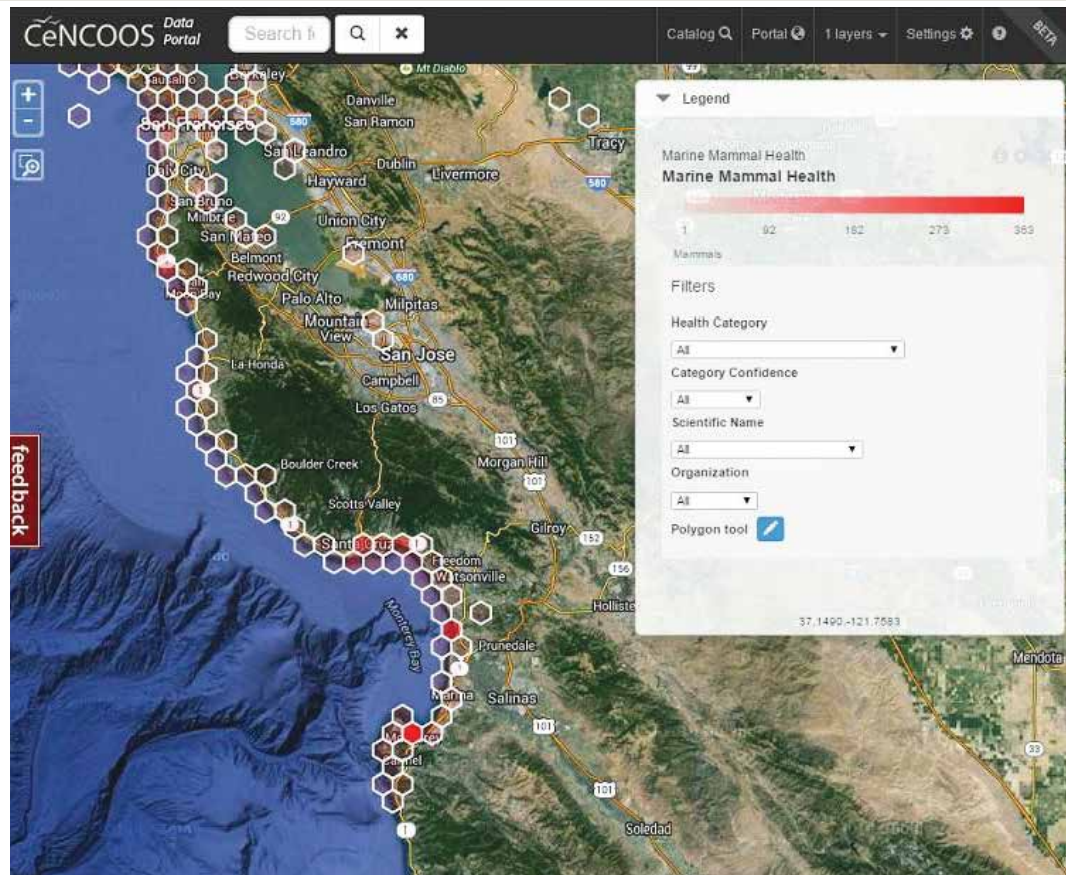


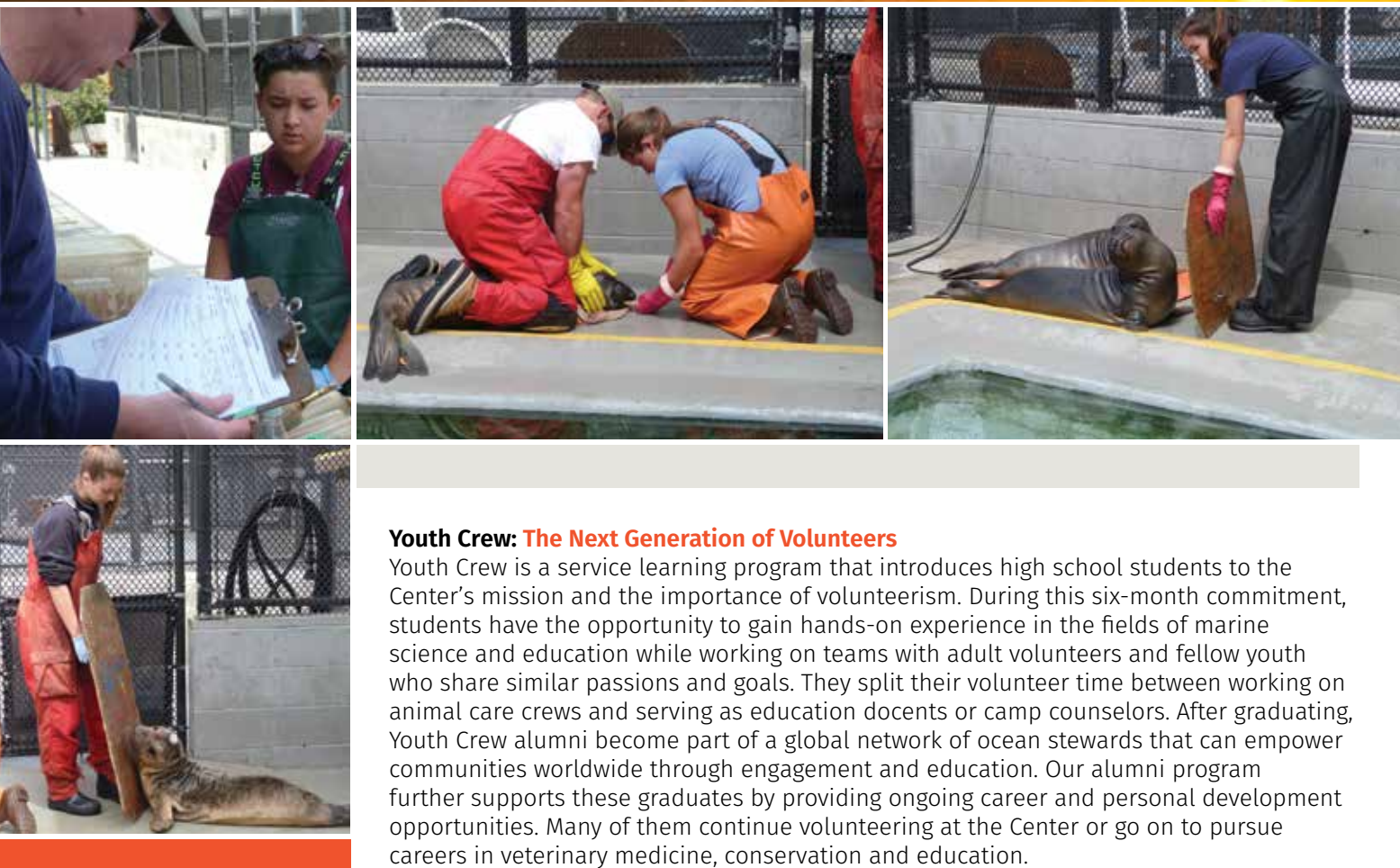
Looking to the Future

The work of The Marine Mammal Center may have started with the rescue of one animal, but it has grown to be so much more than that. As we look to the future, our work must take a bigger picture approach in order to arm future generations with the information and inspiration they need to take the lead on caring for our ocean.

Mapping Marine Mammal Health

In 40 years, we've rescued more than 20,000 animals and collected countless data points in an effort to better understand marine mammal health and how it intersects with ocean health and human impacts. In 2014, we launched a pilot project in collaboration with others to develop a centralized database for all of this information—a Marine Mammal Health Map. By integrating marine mammal health data with ecosystem and oceanographic data, the interactive map would allow a user to evaluate changes in marine mammal health by geographic location and time. Once fully built out, the map would give the public and resource managers an unprecedented ability to detect potential human and animal health risks in our changing ocean environment and to prioritize management and conservation efforts.





Youth Crew: The Next Generation of Volunteers

Youth Crew is a service learning program that introduces high school students to the Center's mission and the importance of volunteerism. During this six-month commitment, students have the opportunity to gain hands-on experience in the fields of marine science and education while working on teams with adult volunteers and fellow youth who share similar passions and goals. They split their volunteer time between working on animal care crews and serving as education docents or camp counselors. After graduating, Youth Crew alumni become part of a global network of ocean stewards that can empower communities worldwide through engagement and education. Our alumni program further supports these graduates by providing ongoing career and personal development opportunities. Many of them continue volunteering at the Center or go on to pursue careers in veterinary medicine, conservation and education.



Our Donors

The Marine Mammal Center proudly recognizes and offers its most sincere appreciation for the generous support we received from donors during the 2014 calendar year.

These gifts and pledges sustain our ongoing work in animal care, scientific research and marine science education.

CHAIRMAN'S CIRCLE

\$50,000+

Anonymous*
Marc and Lynne Benioff
Pat Callahan and David Dee*
Charles R. Rickert Revocable Living Trust
Carole Strauss*

\$25,000 - \$49,999

Elena and Arthur Court*
Virginia and Glenn Haldan*
Catherine M. Kruttschnitt*
Ambassador and Mrs. Arthur C. Latno, Jr.*
Faye & Sandor Straus - Firedoll Foundation*
Nancy and Gregory Wilson*

\$10,000 - \$24,999

Anonymous
Dr. Anurag Acharya and Dr. Madhuri Chattopadhyay*
Christine and Robert Hunter*
Karen Johnson-McKewan and Tom McKewan*
Maureen and Jim Kearney*
Michael Kleeman*
Elizabeth Knier
Denise and Chris Lundquist
Cinnie and Merrill Magowan*
Glen Mathison and Zoel Fages
Ramona and John Mays*
Sunny and Mark McKee
A.E. & Martha Michelbacher Fund*
Ann Petersen
Barbara Rambo*
Kathryn Reavis and David Strohm*
Eric Roberts/The Roberts Foundation*
Matt and Yvonne Rogers
Julie S. Turner and Erica Worthington*
Jean and Phil Warren*
Jeanne and Harold Williams*

PROTECTED RESOURCES CIRCLE

\$1,000 - \$9,999

Anonymous (19)
Lawrence Adams*
Melisa Ambers and Darryl Rose
Mr. Robert J. Amos*
Mary Anderson
Warren E. Anderson*
James and Daphne Araujo
Edward and Sallie Arens
Patricia and Peter Arrigoni*
Julie and Tom Atwood
Mary Bachman and William Downing*
James Baer
Adu Bagley
David Bangerter
Tyler Banks
Rocky and Shelly Barbanica*
Douglas Barnes*
The Barnston-Koutsafis Foundation
Darla and Richard Bastoni*
Andrea E. Bates
Barbara and David Beasley*
Ms. Sharon A. Beckman and Mr. Gregory N. Brand*
Paul and Mildred Berg*
Robert and Wendy Bergman*
Gregory Alan Berry, Jr.
Lara Blanton, Brand X Editions
Jeanne Bobbitt*
Merrill Bobele and Ms. Joanne Bobele
Stephen Boles
Michael C. Booth and Michael Oliva
Andrea and Chris Borch
Kerry Boyd
Jacqueline Brotz*
Emily Brown
Jeff A. Brown
Dave and Helen Burton
Ken and Julie Busch
Deborah Carlton
Phil and Carol Carpenter
John Catts and Sheila Roebuck
Laura Cavanagh

Donor Highlight: 40th Anniversary Presenting Sponsor PG&E

For the past 25 years, **PG&E** has partnered with The Marine Mammal Center to support educational activities for visitors at the Center as well as students in Bay Area classrooms through our innovative Sea to School program.


© David Wakely Photography



In 2010, **PG&E** donated funds to support the installation of a 20-kilowatt solar power array at our hospital in Sausalito.

The solar panels help generate clean power for the water filtration and recycling system and serve as a visual reminder about the importance of clean energy.

Alan Charles*
 Glen and Angela Charles
 Helen and Felix Charpentier*
 Kelly Chessen*
 Alice Church
 Larry and Nancy Church*
 Stacey Citrin
 Shirley Llanos-Clayton and Scott G. Clayton*
 Margaret Lopata and Don Cleveland*
 Bernadette Cohen
 Jeanne Colette Collester
 Rebecca and John Colligan*
 Rebecca and David Conant*
 Martin F. N. Cooper*
 Mrs. Marion M. Cope*
 Heidi Cox
 Diane Culbert
 Ingrid Woods and Steven Cummings*
 Phillip J. Cusano
 Lynn Bay and Bruce C. Dayton
 Charles de Guigne*
 Delaura Demarco-Logue
 Barbara W. Deméré
 Adelaide and Raymond Deméré
 Diane Diggins*
 Susan and Wendell Dinwiddie*
 Ann Domm*
 Denise Donato-McConnell
 Glenna and Judith Dowling
 The Richard H. Driehaus Charitable Lead Trust
 Ms. Sherry E. Dunning-Riley*
 Jennifer Durney
 Rear Admiral and Mrs. Thomas Eccles
 The E.D. Foundation
 David Edelsohn*
 Donald Ellis
 Ms. Helen M. Embree
 The End of History Inc.
 Tina Engel
 Marion G. Euphrat*
 Heather A. Evans*
 Tom Evans and Nancy Lockhorn*
 David and Connie Fair
 Jeanette Fair
 Family and Friends of Alan Young
 Waltraud Finch
 Mitchell Fong and Denise Walsh*
 Abigail Fosdick
 Joan and Robert French
 Michelle and Robert Friend*
 Barbara Gain*
 Laura Gallagher
 Sanford and Linda Gallanter Foundation
 Susan Garbuio and William B. Nern, Jr.
 Marilyn and Bob Garibaldi*
 Denise Garner*
 Al Garren
 Colleen Gately
 Ms. Michelina Gauthier
 Liana Genovesi and Scott Ahrendt*
 Michael Genhart
 Jutt and Ole Georg
 Alyce Gershenson*
 Linda Gibboney*
 Jerry and Val Gibbons*
 Rufus Gifford and Stephen DeVincent
 Mary and Clinton Gilliland*
 Danielle and Mike Gilmore*
 Florence and Steven Goldby*
 Julie Goldman and Robert Rosner*
 Suzanne Golt
 Nina Grass*
 Susan Grau
 Susan Gray
 Patricia Greenhood
 Sara C. Griffith
 C. Stephen Kriegh and Dr. Pamela Gronemeyer*
 Genevieve Gudebski
 Ellie Gustafson
 Vicki Gutgesell
 Michael Hackett and David Hale
 Michael and Darlene Hancox
 Hope and Osborne Hardison*
 Karen and Rick Hargrove*
 Suzanne A. Harvey*
 Willard Hay
 Gwen Hayes
 Mrs. Diane Henry
 Anne M. Herbst*
 Lynne Hermlé and Craig Collins
 Lesly Higgins and Joseph Bunker*
 Diane Hineline
 John Holmes
 Jane and James Hopkins
 Elizabeth Hosick
 Peter Hricak
 Joshua Hutchins
 Beth Inadomi and Tim Newell*
 Becky Wong-Insley and Mark Insley*
 Mr. and Mrs. James T. Jensen
 Stan Jensen*
 Ms. Emi Jobling
 Robin and Robert Johansen*
 Suzanne Jones
 Tammy Jones
 Shelby Junghandel
 The Dirk and Charlene Kabcenell Foundation*
 Janey and Kevin Kaster*
 Doug and Cessna Kaye*
 Judy Heymann Kazan & Steven Kazan
 Maria Kazandjjeva
 Frank and Arlene Keesling*
 Erika Kelton
 Olga E. Kay Kennedy*
 Mara Kerr and Mark DiOrio*
 Jeanie and Murray Kilgour*
 William and Gretchen Kimball Fund*
 Fran King
 Suzanne and Jerry Knecht*
 Krystal and John Konrad*
 Ms. Jennifer Kosloski and Matt Spring
 Mr. and Mrs. Hank Kuechler
 Ann La Borde*
 H.R. LaBar Family Foundation Fund*
 Dr. Roger Lang and Mrs. Sue Lang*
 Sally Lappen and Nik Warren
 Karen Larsen*
 Joanne L. Lasnier*
 Benjamin Last and Julia Buck*
 Jean Lattin
 Jennifer and Chuck Laue*
 Carol and James Layne
 Joe Lemacher
 Al and Ethel Lerche*
 Ms. Ruth Levitan*
 Cheryl Lewis
 Robert and Rita Lewis*
 Sharon Liu*
 Janet B. Lockard*
 David and Mary Love
 Gale and Jon Love*
 Carma Luskin
 Shirley Lustig*
 Liz and Mel Lyman*
 Dr. Clara MacNamee*
 Peter and Amy Mangarella
 Nicolas and Amalia Maquaire
 Bobbi Marchand
 Barbara and Fillmore Marks*
 Ms. Jennifer Marler
 Zora Martin Etemadi and Tera L. Martin
 Dennis Martino*
 Doretta and Robert Marwin*
 G. Sealy and Deborah Massingill, M.D.*
 Paul and Joanne Maxwell*
 Maureen McClain*
 Jennifer McComb*
 James R. McCurdy, M.D.*
 Debra and Tom McDonald
 Robert and Denise Meeks
 Allison Milgard
 Sue Miller
 Linda and Michael Minor
 Shalla Mirkhani
 Leia Muenster
 James Murphy
 Paul and Susan S. Nagata*
 Andrew Nance
 Matthew Naythons
 Nancy and Matthew Noel*
 The Norris Family
 Carolyn and Michael Novosel
 Wenonah and Robert Oda
 Dorothy Orolin*
 Olivia Orr*
 Mary Oxford
 Lisa Pantages
 Lea C. Park
 Sandra Patterson
 Marian and Al Pawlick*
 Arlene Peacock*
 Richard and Jane Peattie*
 Eileen and Phillips Perkins*
 Bonnie and Joseph Phair
 Andrea and Pat Phelps*
 James and Eleanor Plessas
 Nancy Quintrell*
 Mark and Donna Rand
 Lia Fernandez Ray*
 Caroline Read
 Reed Family Foundation*
 Karen and Guy Reynolds*
 Greg and Linda Rice
 June Richard*
 Julie and Martin Richards*
 Roxanne and Bert Richards
 Jenny and Gerald Risk
 Stephen and Beth Robie
 Christina Robinson
 Ms. Pat Robison
 The Robison Family Foundation
 Lorelei Rockwell and Wayne T. Kennedy*
 Laura Roebuck and William Meehan*
 Maureen Roland
 Joan Royce*
 Pat and Glenn Rudebusch*
 Mrs. Alexandra Rukeyser
 Heather Ryan
 Pamela and Bill Sagan
 Saint Mark's School
 Christi and Tim Saltonstall
 Linda Schmidt*
 Kathy and David Scially
 Susan and Craig Scott
 Stacy L. Serber*
 Arnold and Karen Shapiro*
 Susan Shapiro*
 Frances Sheehan
 Susan and Greg Sickal
 Jill and Richard Sideman*
 Russell and Beth Siegelman
 Carol and John Simon
 David and Inga Sleeth
 Jill Spicer*
 Barbara Squarey
 Kathy Steadman
 Frances Stevenson
 Amy Stone and Chris Stone*
 Rovena Tacusis
 Patricia and Alan Tai*
 Gordon and Denise Talbot
 Beverly Tanner and Jerry Herman*
 J. Holley Taylor
 Scott and Patricia Teaford*
 Jean S. Thomas*
 Mr. and Mrs. John C. Thornton
 Mr. and Mrs. Donald Tornberg*
 Stephanie Travis*
 Marguerite and Peter Trethewey
 Kathy Tyson*
 Kate and Richard Vance*

 ***Five or more years of consecutive giving.** If you recognize an error or omission in this listing, please accept our sincerest apologies and feel welcome to contact us at 415.289.7335 or give@tmmc.org.



Our Donors

26

Jennifer and John Vogel*
Deborah and Bruce Wagman*
Ms. Elizabeth B. Wagner
Mr. & Mrs. Brooks Walker, Jr.
Laurel S. Walsh
Nina Washburne and Brian Wells*
Heather Taeko Waters
Julie Watt
Karen and Stan Watt*
Lawrence and Marion Weiss
Ms. Jenelle Welling
Mr. Joseph A. Wender, Jr.*
Wendy Werby
Sara West
Janet Whatmough*
Lynn White
Ron Will
Bob Wilson*
Kathryn Winter*
Priscilla K. Witt
Barbara and Thomas Wolfe
Woodward Family Endowment Fund
Carol Wulff
Charlotte Yeo
Kathryn Yulish*
Brian and Natalie Zeiler
James Andrew Zurn*

KELLAN CIRCLE

\$250 - \$999

Anonymous (91)
Nick Abbott
Heshani Abeysekera
Viki Adam
Barbara Adams*
Mary Jane Adams*
Advaita Fund
Sal Agosta
Fred Aguiar
Robert and Nadine Akins*
David Akka
Shubber Ali
Roberto Aliberti
Janis Allard*
Diane Allen and Kathleen Quenneville
Jason Allen
David and Sandy Allen
Thomas Allen and Kathleen Davidson-Allen
Jill Allread
Shelley Alonso
Mark Altvater
Babette and Mark Alvernaz*
Dr. Dan Ames
Ms. Nancy Amini
Jean Amos*
Carolyn and Charles Anderson*
Rita Andis*
Judy Andrews*
Chris Andrian
Ms. Patricia Angell*

Nancy Angove
Michael Anthenien*
Tom Antisdell
Sabine Antonson*
Dr. Barbara S. Apgar
Naomi and Bruce Appleton*
Philip Arnberger*
Ms. Susan Arnett
John and Marlene Arnold*
Richard Arthur, IV
Jane and Douglas Ashe*
Laurie Ashley*
David Asseff
Georgene Aster*
Joyce and B. Atherton*
Ms. Barbara J. Atwood
Margery Avirett*
Mrs. Liliana Ayala Berlyn and Mark Berlyn
Christopher Aycock
Renate Bachalo*
Jerrold Bagnani
Ms. Melissa Bain and Ms. Peggy D. Johnson
Ms. Erin R. Baker
Uma Balakrishnan*
Elise and Robert Balcom*
Phil Baldacci
Darlene Balducci
Suzanne Baldwin
Barbara Balik
Janet and David Ball
Marilyn Barkin*
Lale Barlas
Linda Barnello
Regina Barnett
Julie Barney*
Luis and Ramona Barrantes
Susan and Sean Barrett*
Muire Ellen Barrett-Warthan
Michael and Linda Barry*
Lisa Bartlett*
Paul Bartlett and Yumi Nakagawa*
LouAnn Bassan and Larry Klingenberg
Cathy and Lee Battles
Maxine Bauchmann
Mayurendra and Bradford Baugh
Gary and Laurie Baum*
Lee D. Baxter
Ted Bayer
Lorraine Bazan and Chris Stover*
Jeanne Beauchel-Bodiford*
Andrea Beck
Pat and Bill Becker
Amanda and Lucas Beirne
Susan Belcher
Marcia and Michael Belford*
Ms. Perk Bell*
Rita Foegal Bell*
Terri and Steve Belsley*
Pamela and Albert Bendich*
Joan Benjamin*
Ms. Linda J. Bennett

Nancy Bennett
Sharon Bennett*
Beverly Benson*
Robert Benton
John Berge
Joanne Bergen*
Ellen and Steve Berger
Ms. Janice L. Bergmann
Rachel Bergren
Barb Berman*
Karen Berman
Susan Berman
Mr. Richard J. Bernal*
Debra Bernard
Janice Bernard
Teresa Bernards
Dr. Wendy B. Bernstein
David and Kamala Berry
Karen and Yogi Bert*
Mary Betlach*
Karin and Michael Beumer-Browner*
Marygale Beyer
Nelson and Alice Bickers*
Cliff Bickford*
Cindy Biehler
Judith Biehler*
Nancy and Lucius Biglow, Jr.
Karen Birks*
George Bischof and Kerry Bischof
Pamela Bishop*
Ms. Caroline V. Bissell
Cheryl Bizar*
Lauren and John Black*
Garrett and Michelle Blake
Ms. Sheila Blake
Sissy Blanchard*
Deborah Blankenberg*
Craig and Lauri Blek*
Ms. Ammala Block
Ronald Bloomstran
Robert Bodnar and Melissa James
Bo and Loretta Bolin*
George and Susan Bono*
Robert Bonocore and Judith Bonocore
John and Lesley Boveri
James Bowlbliss and Laurie G. Smith
Bowlbliss
Dorothy A. Bowman
Eileen Boyd
Lynne Boynton*
Mrs. Melissa Bradley
Miriam Bradley
Sarah and Walt Bradley*
Al Brajkovich
Norman Brand and Nancy E. Spero
Ruth H. Brandt*
Rena and David Bransten
Mr. Bernard Brasseur
Robin Brasso
Dr. Ada Braun
Ida Braun

Brian Brennan
Kay Brennan*
Kevin Brennan
Mary Brenneisen
Mr. Brian Bridge
Mrs. Walter F. Brissenden*
M. Brittain*
Louis Brock*
Wanda Bronson
Douglas Brookes*
Carol R. Brookman*
Ms. Colette A. Brooks
Jeffrey Brooks
David Brown
Gregg and Dawn Brown*
Karen Brown
Nancy Brown
Stephen and Susan Browning*
Dorothy and James Brunssen*
Peter Buck*
Keith Buckingham
Judith Buckingham-Perlstein
Waltraud and Michael Buckland*
Ms. Katherine Buckley
Deborah Buehler*
Maynard P. and Katherine Z. Buehler
Foundation Fund
Mark and Linda Buetzow*
Mary Bullard*
Terri and Ted Bumgardner*
Bonnie Burgess
Rebecca Burgess and Michael Stoddard*
Joan Burke
Lolly and Jay Burke*
Margaret Burke*
William Burke and Karen Buse
Dea Burmeister
Robert Burnett*
Jean Burns*
Ms. Pamela Burns and Mr. William J. Edick*
Jennifer Burroughs*
Barbara Busch*
Robert Busher*
Ingrid Butcher
Paul Butler*
Lorna and Warren Byrne*
Monique Cadoret and Steven Cynciewicz*
Kathryn Caggiano
Geraldine Calderon
Mr. and Mrs. Michael G. Callahan*
Marjorie Callow
Elisa Camahort*
Sammy Campbell*
Tina Campbell
John R. Cannell
Jane and Mark Capobianco*
James and Charlene Carl*
Amanda Sue Carlisle*
Julie Carlson
Mr. David Carlstone
Carondelet High School

Donor Highlight: Run for the Seals

Thanks to more than 900 registered participants and the generous donors who supported them, we were able to raise nearly \$100,000 during our 30th Run for the Seals event on August 15, 2014.



For the third year in a row, our top fundraiser was a Run for the Seals team established in memory of Alan Young, a volunteer who passed away in 2012. And Lisa Cooke, a member of that team, was our top individual fundraiser, contributing more than \$5,000.



In 1981, our first annual Run for the Seals was held in the Marin Headlands.

Chris Carpenter and
Karen Johnson-Carpenter*
Virginia and David Carper*
Caryl Carr and David Presotto
Kathleen Carrai*
Linda Carroll*
Sandra Carroll*
Jade Carroll-Schefer
Shirley Carson*
Carter Chiropractic
Pat Cartwright
Pete Cartwright*
Carolyn Casser*
Ms. Gloria Castillo*
Carol and Joseph Castronovo*
Tymber Cavasian
Mr. Mike Chacon
David and Karin Chamberlain*
Gordon Chamberlain*
William Chan
Barbara Chapman
Mark Charvat
Ms. Kirstin M. Chavez
Cristina Chavira
Carol Chesebrough*
Peggy Childers*
Jon Childs*
Delia Chilgren*
Patty and Geoff Chin
Carol Ching
Matthew Chotin
Tiffany Choy
Kimberly Christensen and David Sielaff*
Kathryn Christiansen
Lani and John Christianson
Amanda Christman
Kathleen Cicalros*
Linda and Thomas Ciotti
James Cirigliano
Carol and David Cislowski*
Dale Clark*
Julia Clarke*
Kenneth and Laura Clarke
Ms. Robertta Clarke
Robyn Cleaves*
Annelle Clute*
Mark Cocalis and Lisa Ann Erburu*
Eileen Coe
Dr. Vicki L. Coe
Arnold and Evelyn Cohen*
Jordan and Elizabeth Cohen*
Mr. Robert C. Cohen
Mr. and Mrs. Thomas Colby*
Alice Cole
Jody Cole
Sally A. Cole
Kevin and Jennifer Collins*
Elizabeth Colton
Lara A. Compton
Karen Conmy*
Michel and Laura Conrad*

Chanin Cook
Renate and Robert Coombs
Dr. Janet Cooper
Wendie Cooper
Carol Copeland
Stephen and Cindy Corrigan
Cort Goldman Family Fund
Debbie and Michael Cortese*
Gail Costa*
Holly Costa*
Michael Costantini*
Elizabeth Coursen
Mrs. Barbara S. Cox*
Russell Cox*
Stone Coxhead
Marilyn Cracchiolo
Linda S. Craig
Ruth Craig*
Hazel J. Crane*
Shari and Don Cravens
Mark Creeley
Maureen and Ray Cronin*
Diana and Peter Crook*
Katie Cullen*
Timothy Culler*
Patricia Culp*
Dawn Angel Cummings
Judith Klein and Mark Cunningham
Nancy Curley
Cari Curtis
Elizabeth Curtis
Linda Curtis*
Bill Cusick
Virginia Czarnecki*
Mrs. Nan Da
Ms. Ann Dadic
Lona Dallessandro*
Noel Daly
Ms. Hilary Danehy and Zaki Alherz
Ngoc Dang
Buzz and Cindy Danner*
Edith Darknell Taylor
Mr. Robert F. Davey*
Denise and Gary David*
Emily and Rob Davies
Brett Davis
Brian H. Davis
Erik Davis
Grace Davis*
Lynden Davis*
Mr. Jon F. Davison
Agnes and Muir Dawson*
Shirley Dawson*
Mr. Francis de Geus and Ms. Helaine Reiner
Marie and Tony De Guzman
Patricia De Narde
Blair Dean
Jerry Dean*
Suzanne Dee*
Jacqueline and Joe Deely
Kenneth Deen*

*Five or more years of consecutive giving. If you recognize an error or omission in this listing, please accept our sincerest apologies and feel welcome to contact us at 415.289.7335 or give@tmmc.org.



Our Donors

Madeleine Deininger
Sue Dekalb*
Dr. Camilla Delsid
Bonnie DeMaestri
Andrew R. Demar Family Foundation, Inc.*
Sharon and Kirch DeMartini*
Lynne and Glenn Dempsey*
Mr. Richard DeNatale and Mr. Craig Latker
Elizabeth and Paul Denison*
Ms. Bobbie Denmon
Melissa Dent
Sheila Desmond*
Roxanne Deurloo*
Rebecca Deutsch
Jennifer Dewinter
Mr. Debashis Dhar and Devyani Biswas*
Irene Diaz*
Ronald and Kristin Dick*
Sandy Diggins*
Mag Dimond
Judith Disbrow*
Peter DiVincenzo
Scott and Susan Doggett
Robert Dollar and Family*
Meghan Doody
Maybelle Dore
Panna Doshi
Mike and Connie Dowler*
Anthony V. Dresden*
Michelle Driscoll*
Andrea Drugay
Kecia Duffy
Glenda Dugan
Cynthia Dugger
Paul Duhamel
Joseph and Rheba Dupras
Janet Dupuy*
Kazumi and Lee Duran
Jessica Dutra
Ms. Ruth R. Dyke
Martha and Anthony Eason*
Dr. Sharon Eaton*
Ms. Elizabeth Eddy
Roland Edwards*
David Elkins
Kathy Ellison
Jonathan and Tracy Ellman
Diane Ellsworth
Patricia Elvebak*
Annette Emerson
Steven Englander*
Engmann Family Foundation
Carol and George Epple*
Dennis Ertsman*
Sharon and Samuel Esterkyn*
Linda Eurman
M. Fahrenwald
Gregory and Tressa Fanoe
Brian and Susan Fargo
Geraldine Farmer*
Pauline Farmer-Koppenol

Kathy Farris
Maureen Faul
Jamy Faulhaber
Ms. Nancy Fee*
Mr. and Mrs. Hubert Feehan
Rosemary Fei and Gary Harrington
Katharine Feidler
Lewis Feldman*
Jennifer Felts
Ms. Karen Fenton
Ms. Sally F. Fenton
Mrs. Eleanor Ferrari
Richard Ferrie
Charles Ferris*
Linda Ferris*
Richard Ferris
Pam and James Ferris-Olson*
Bessie L. Fickel
Elizabeth and Randy Field*
Suzanne and Conrad Figueroa*
Sandra Fisher
Cheryl Flango and Keith J. Osiewicz*
Alice Mead and Richard Flaster*
Ms. Sally Fleming*
Mr. and Mrs. B. Mason Flemming, Jr.
Girts Folkmanis
Jeanne and Darryl Foreman
Alana and Melissa Forrest*
Linda Forsberg*
Marilyn Foster*
Virginia Fout
William K. Fox
Nancy G. Frakes*
David Frane and Charla Gabert
Rich Frank*
Mr. and Mrs. Gary T. Franklin
Mr. William R. Franzen
Megan Frazer
David Frediani*
Ms. Monica Freeder
Jeff Freedman*
Sheira Freedman*
Carolyn Fremgen*
Lorien French
Robert Friedman*
Susan J. Friedman and Philip Skehan*
Raymond and Catherine Frink*
Gaye Frisby
Justine Frischmann*
Laurel Frishman
Ms. Jackie Fritz
Michelle Frost
Nancy Frost
Mr. and Mrs. Robert Frost*
Jeff Fry
Lon and Tess Fry*
Heidi Fuchs
Julia Fuller*
Jacqueline Gaffney*
Lisa and William Gala*
Marian Gallerani*

Donor Highlight:

Disney Conservation Fund

For the second year in a row, The Marine Mammal Center was awarded a \$25,000 grant from the **Disney Conservation Fund** in recognition of our efforts to save the Hawaiian monk seal from extinction. This grant will help fund our rescue and rehabilitation efforts as well as support ongoing scientific research and education, both of which are vital to the long-term conservation plan for this critically endangered animal.



The **Disney Conservation Fund** works to protect species and habitats, and connect kids to nature to help develop lifelong conservation values. Since its founding in 1995, the **Disney Conservation Fund** has supported more than 1,000 conservation programs in 112 countries. **For information on Disney's commitment to conserve nature, visit disney.com/conservation.**

Chris and Ane Gardner
 Roxane Geggie*
 Mrs. William D. Geiger, Jr.*
 Roxanne Gentile
 LaQuita Gentry
 Margo George*
 Joan Getsinger*
 Nigel Gevisser
 Jennifer Gibson*
 Robyn Gillette*
 Lynne Gilliam*
 Deborah Gillingham*
 Elisabeth Giovine
 Christopher Gladwin
 Heather Gleeson
 Ms. Joyce Godecke
 Alexandra G. Goelet
 George Goerl
 Karla and Jim Golden
 Danielle Goldman and Dan Zach
 Gage Goldman - Volunteer
 Mrs. Maria Gonzalez
 Sharon Goodman*
 Constance Goodyear Baron and
 Barry C. Baron
 Ms. Patt S. Gorsuch
 Mr. Geoffrey D. Gosling*
 Michele and Richard Goss*
 Lynn Gotchall
 Beth Gothrick
 Kimball Gottschall*
 Patrice Gouveia
 Emily Graham*
 Bonita Granlund
 Renee Grannis
 Ms. Natasha Granoff
 Anthony and Caroline Grant*
 Joan and Robert Grant*
 Mathew A. Grant
 Ms. Mignon Gravitch*
 Brian Gray
 Gary Gray*
 Carolyn Greco
 Janet and Jon Green
 Susan Greendorfer*
 Joanne and Robert Greene
 Eric and Sara Greenwood
 Renee Gregory
 Christine Grella*
 Irma Grieve
 Kimberly Griffin*
 Ellen Griffith
 Douglas Grijalva
 Sandra Grijalva*
 Jennifer Grimes*
 Susan Grisso*
 Thomas and Winniefred Grof*
 Lisa and Jamie Grooms
 Nancy Grosfeld
 Greg and Cristin Grothaus
 Cynthia Groves

Dean A. Grubb*
 Keith Grundy*
 Robert Guenley*
 Mr. Gregg T. Gumbinger and Ms. Amy J. Garcia
 Bob Gurwin and John Rourke
 Kathy Simons and Jeff Gustafik*
 Charles and Ginger Guthrie*
 Sue A. Guzman
 Mary Haack*
 Duane and Sherry Hadley*
 Ms. Blanca Haendler*
 Harry Haines*
 John Haines*
 Robert and Maxine Halem*
 Jill and Martin Haley
 Deborah and Donald Halliday*
 Donna M. Halliday*
 Allen Hallock*
 Barbara Ham
 Jill and Jefferson Hamilton*
 M. Hanamura
 Eugene Hanes*
 Douglas T. Hanks*
 Mr. Kevin Hanks and Mrs. Cindy Schneider*
 Ms. Heather Hanly
 Melissa Hanmer*
 Margaret Hannan
 Charlotte Hansen
 Ms. Jacque M. Hansen and Mr. Hector
 Hernandez*
 Jan Hansen*
 Laura G. Hansen
 Paula Hansen*
 Ms. Judith M. Harada
 Kathy Haranzo*
 Tracy Harcourt and Ed Chejlava*
 Katherine Harle and Dominic Robilliard*
 Mark Harlin
 Patricia Harp*
 Elizabeth W. Harrington*
 Dr. Margaret Harrington*
 Roger Harrington*
 Agata Harris, and Paul and Ellen M. Peraino*
 Lawrie Harris*
 Gina and Steve Harris
 Ms. Tina M. Harrison
 Jill Harsin
 Kathryn Hart
 Ruth Hartmann*
 Ms. Kathleen Hartnett*
 Chris Hass
 Margaret Hassett
 Sharlene Hassler
 Curtis Hastings and Diane Carpenter
 Mr. and Mrs. Gerald Hatch
 Jesse R Hatton, Jr.
 Hugh Havlik*
 Dolores Hawke*
 Mr. David Hawkins
 Stacey and Derek Hawkins
 Lila and Iris Hawks

Belle Hays
 Wendy Hayward and Rich Wendling
 Randi Heald
 Debbi Heatherly
 Lynda Heathscott
 June Heilman*
 Zach Hench
 Kirstin Hendrickson
 Ms. Susan Hendrie-Marais and M. L. Marais
 Nanette Henneuse*
 Ms. Katherine Henry
 Aaron Herington
 Cheryl Hermansen and Ron Hermansen
 Deborah and Jim Hernandez*
 Stephanie Herrera
 Bruce and Joan Herriges*
 Gerdika Hesche-Elberfeld*
 Andree S. Hest*
 Lesli Hewitt-Spears
 Elizabeth Heyd
 Donna Hiatt
 Deandra Hicks
 Frances and Jeffrey Higginbotham
 Mary Ann and Stephen Higgs
 Jolanda Hightower*
 Ray and Sharon Hill*
 Steve Hill
 Terry Hill
 Judith Hilliard*
 Marisa Hillinger
 Arthur Hindman
 J.B. Hinds
 Mary Hink
 Myron Hinrichs
 Ms. Sally Hinshaw
 Willie and Wen-Wen Hinze
 Kurt and Barbara Hirschfeld
 Susan Hoeschler
 Howard and Sandra Hoffen
 Caitlin Hoffman
 Ken Hoffman
 Paul and Marianne Hoffman
 Ms. Danielle Hofing*
 John Hogan*
 Mary Hogan*
 Margo and John Hohulin*
 Elizabeth W. Holden
 Michael Holdridge*
 Gary and Karen Holm*
 Mrs. June P. Holmes*
 Ms. Virginia Holmes
 Sally Holt*
 Greg Hoobler
 David Hooper*
 Helga Horner
 Julie and Gregg Hosfeldt*
 Sue N. House
 Chet and Lori Howard
 Jean E. Howard
 Judith Howard*
 Kimberly Howard

Wendy L. Howell
 Christina Howland
 William L. Hudson
 Donna Ewald Huggins
 Ms. Ethel M. Huhn
 Ryan Hultquist
 Christopher Hunt
 Judith A. Hunt*
 Melissa Hurley*
 Kathleen Hurrle*
 Tom and Cheryl Huse
 Michael T. Ina
 Jorge Iniguez
 Mary and John Irwin*
 Rachel Ivanyi
 Elizabeth A. Jackson*
 Anne and Edward Jamieson*
 Mr. & Mrs. Charles F. Jaris*
 Lee and Wini Jebian*
 Lisa Jeffrey*
 Teresa and Roy Jennings*
 Kenneth Jensen
 Patricia and Janice Jio*
 Mr. Benjamin F. Johnson
 Carol M. Johnson
 Cynthia Johnson
 Deborah Johnson*
 James Johnson
 Mr. Linn E. Johnson and
 Ms. Patricia M. Connor
 Marcine M. Johnson, Ph.D.
 In Memory of Mark Johnson*
 Sally Johnson
 Toni Johnson*
 William A. Johnston and
 Susan B. Olson-Johnston
 Roberta Joiner
 Ms. Karen R. Jolliffe*
 Cristina Jones*
 Ms. Dorothy Jones*
 Gary and Casey Jones
 Julie Jones
 Kitty and Gregg Jones
 Laura Jones*
 Loretta Jones*
 W. Helene and Paul Jones*
 Rebecca Jones-Torre
 Halle Jordan
 Ms. Patricia A. Jose*
 Ms. Marie E. Joyce
 Mary Lou Joyner*
 Kimberly R. Kahn, DVM
 Yoshiko Kakudo
 Judith and Martin Kaliski*
 Lawrence Kampel
 Debora A. Kane
 Lloyd and Joan Kapp*
 Yvonne Karas
 Susan Karnstedt
 Joyce and Barry Karpay
 Ellie Kass*

***Five or more years of consecutive giving.** If you recognize an error or omission in this listing, please accept our sincerest apologies and feel welcome to contact us at 415.289.7335 or give@tmnc.org.



Our Donors

30

Carlyn Clement and
Christopher Kaufman*
Sy Kaufman
Lorna Lee and Jim Keefe
Karen Kehoe
Susan and Barton Keiser Shaler*
Stan Keiser*
Lynne Keller
Consuelo Kellogg*
Colleen Kelly
Dr. Julie J. Kelsey*
Todd Kelting and Melissa Neiman-Kelting*
Roberta Kemmerer*
Ms. Kathleen E. Kemper
Cynthia Kendall*
Roxanne Kennedy
River Kenneth
Barbara Kent*
John Kent*
Carolyn Kepes and Daniel Foley
Carol and Gary Kerbel*
Barbara Kerr
Jay Ketchen
Suzanne Khan
Richard Kidd
Margaret E. Kiley*
Elizabeth King
Tom and Sara King*
Sally and Philip Kipper*
Elise Kirban
Alexander Kirk
Mrs. Roy G. Kirk*
Rose Kish
Cindy Kisshauer*
Diana Kissil and John Cullison
Cheryl Kitchell*
Diane Klein*
Lyn and Don Klein
Mr. and Mrs. Michael Kneel
Alexa D. Knight
Ms. Alexandra A. Knight
Ms. Susan Kofnovec
Marjorie and Ralph Koldinger
Wendy Konsorada
Alyssa Koo*
Ralph Koo*
Mr. Michael Korek
Gregory Korelich
Wyatt Korff
Henry Korth and Joan Korth-Bradley*
Christine Koski*
Jason Kossan
Mr. Christopher Kovaly
Linda and Timothy Kramer
Mr. and Mrs. Wayne Krebs
Kayliana and Tahlia Kreutz
Michelle Krumland
Dr. Lauren Krup*
Jerome Kruszka*
Keiko Kuroda*
Dennis and Sharon Kurtz

Shyam Kuttikkad*
Carolyn La Rocco
Nick Labeledz
Mary Lou Lafler
Dr. Michael D. Lagios
Maria and Paul Lambert
Kelley Lamke
Kari Lamprech and Jon Lamprech*
Kristen Landes*
Marisa Landsberg
Patricia and Norman Landsberg*
Kim M. Lang*
Valerie I. Lang*
James Lanier
Lucienne T. Lanson, M.D.*
Marie-Nicole Lapeyrade
Edward Lapidus
Suttirat Larlarb
Shelly Larsen
Barbara Larson*
Catherine and Collin Lau*
Ms. Kathryn Law Lauck
Ms. Julie Lawell
Janet and David Lawson
Darin Layman
Kathy Lazzaro
Sarah Leach and Kenneth Drexler*
Nan and John Leavell*
Holly Ledesma
Erika Lee
Jim Lee
Matthew and Ann Lefkowitz*
Barbara Legler*
Kathleen A. LeGrand*
Cathy and Ted Lehmann
Jeffrey and Lara Lehmer
Patricia A. Leighfield*
Hollis Lenderking*
Rebecca J. Lent and Utpal P. Vasavada
Donald L. Leonard*
Cheryl and Kevin Leslie*
Ms. Margo Rogers Lesser*
Yvette Leung and Liwen Mah
Janet Leventhal
Marlene Leviton
David Levitt
Ms. Diane E. Levy*
Sharon and Ernest Lew
Nina Lewin
Larry Lewis
Pam Lewis
Risa Lichtman
Nancy A. Light and Brian Delahunt
Irene and William Lincks*
Paul and Aren Lindstrom*
Richard and Laurie Ling*
Peter Ralston and Pattie Litton*
Mr. YiChang Liu*
Peter Llerena*
Daniel Lloyd*
Kyle Locke and Katie Mickey

Elizabeth and Daniel Lockwood*
David and Diane Logan*
Vicki Lohr*
Ms. Linda Lohse
Norman and Marie Lomas
Donna Look*
Bill and Edy Loorz*
Joanne Lope
Yolanda Lopez*
Andrea LoPinto*
Cathleen Loudon
The Love Kumar Family Fund
Vanessa Lowe
Laurie Lowrance
Pamela Lowry
Laura Lubin
Diane Luders*
Fay Lupacchini
Gerard Lynch and Karen Marisak
Shirley Lyon*
Karin MacDonald
Brian MacDonald
Christian D. MacDonald*
Patricia MacDonald*
Maria del Carmen Macias*
Elinor MacKinnon
Christine Macomber
Mary Macor
Dawn Macris*
Patricia and David Maddox
Karen Madsen*
Bernice C. Maertz*
Steven Maginnis
Joan Maguire*
Shana Mahaffey*
Charles and Rose Maher*
Noreen Mahoney*
Siobhan Maize*
Marilyn A. Makepeace and Anne Maczulak
Luz Malan*
Ms. Janie B. Malcolm
Katie Malling
Brigid Malumphy
Elizabeth and Donald Manning*
Kristen Mansel*
Marin Mapstead*
Donna Marietta*
Miss Darian A. Mark
Kelly Marriott
Ms. Elizabeth Marshall*
Karen Martin
Redge and Carole Martin*
David Lawson and Belinda Martinez
Kimberly and Mark Martinez
April Mason*
Carole Mason
Alan C. Mathewson*
Peggy Mathieson
Sherri Matteo
Carol Mattern*
Glenn and Dolores Matteucci

Dorothy and Thomas Mayer
Susan and Michael Mayne
Lorie Mayo
Guy and Happy Mazula*
Julie Mazur-Denison
John and Yvonne McClung
Pamela McGowan*
Christina R. McArthur and
Richard Rubenstein
Sally McCabe
Marilyn Mccall
George and Patricia McCammon*
Kristy McCann*
Lily McCleary*
Martha McClellan*
Peggy McCormick
Lynn McCreary
Bradford McCullough*
Mr. James W. McCummings
Kathy McCurdy
Linda McElroy*
Patricia McGinnis*
Mary McGoldrick
Mrs. Beverley J. McGraw*
Donald and Nancy McKay*
Edana McKenzie*
Harry McKenzie
Christina McKinley*
William McLarty
Michele McNamara
Jennifer McNealey
Alice Mead*
Ms. Georgann Meadows*
John H. Medinger
Purple Lady/Barbara J. Meislin Fund
Jill Melchione Spinelli*
June Mellish*
Julaina and Richard Mendlen*
Rani Menon and Keith Amidon
Alan and Peggy Merriam
Ms. Kate Merriman
Carolyn Metcalf
Eileen Metzger*
Barbara Meyer
Paul and Marilyn Michaelson*
Ms. Bonnie Miarta and Mr. Al Borissenko*
Sally and David Mikkelsen*
Frank E. Miller
Karla and Gary Miller*
Lynn Miller*
Marije Miller
Mickay Miller
Susan and Walter Miller*
Joyce Milligan*
Brenda and George Milum*
Gayle and John Minkler
Mr. William Minkler
Ms. Margaret Minnick
Marlin and Lee Miser*
Albert S. Mishaan and Jennifer Colyer
Alison Mitchell

Donor Highlight: Special Release Events

One of the most rewarding aspects of our work is seeing healthy animals return to their ocean home after spending time in our care.

And because none of this work would be possible without support from our donors, we invite them to attend a release event each year.

Members of our Kellan Circle, Protected Resources Circle and Chairman's Circle, as well as our corporate partners, are all invited to these special events, which take place throughout our rescue range.



For more information on joining one of these giving circles, please contact us 415.289.7335 or give@tmmc.org.

Beau Mitchell
James Mitchell
Verna and Bill Mitchell
Mitchner Family Philanthropic Fund
Evan Mizrachy*
Jennifer Mo*
Renita Mock*
Gary and Gloria Modrell
Steve and Cynthia Molino
Donna Mollenhauer
Susan Monard
Suzie and Bryan Moore
Jennifer and Michael Moran
Cathy Moreland*
Katherine Morris
Mr. Malcolm A. Morris*
Charie Morrison*
Kevin Morrow
Marge Mortensen*
C.B. Morton
Julianne Mossler
Mitchell Moughon
Elaine Mowday
Nancy Moyle*
Christopher Moynihan
Kellie Muckleroy*
Tara Mueller
Kem Mulaney*
Mr. William J. Mulcahy*
Katharine Mulvany*
Martin and Jamie Mumford
Nicole Murch*
Jennifer Murer*
Ms. Anne Murphy
Glee and Chuck Murphy
Joyce Murphy
Monica Murphy
Kathleen Murray*
Roger and Mary Murray*
Lynne Murrell
Gertrude Musey*
Ian and Lesta Nadel*
William Nadel
Yukiko and Robert Nakano*
Nancy Nee*
Paul and Anne Negus*
Ellen Neidle
Anita and Edward Nells*
Patsy and Paul Nelson
Theresa Nelson
Cathy Netz
Ms. Linda Newman
Mr. Michael Neyman
Jennifer Ng*
David Nichols
Larry and Pamela Nichols*
Marina Nichols and Jesse Fielding
Ronald F. Nichols and Maureen A. Nichols*
Natalya Nicoloff
Lynn and Karl Nielsen*
Sheila Nielsen

Ellen and Robert Niemitalo*
Tom and Anne Niesen*
Jeannette Nishida and Stephen Gabow*
Donna Nishimoto*
Roger and Ann Noll*
Ms. Doris Nordeen*
Elizabeth Noronha*
Laura Novak
Don and Diana Nunemaker
Leslie A. Oakes*
Suzanne and Wulfrin Oberlin
Elizabeth and David Obershaw*
Nancy O'Brien
Rebecca O'Brien
Mark and Diane O'Connell
Ms. Connie O'Connor*
John Odell
Martha H. Oehler*
Michael and Simona O'Hare
Brian Okeefe
James Oliver*
Linda Olson*
Lynne Onak*
Donna Oneill
Remy O'Neill*
Todd and Anh Oppenheimer
Lynda Oprescu*
Erwin Ordeman*
Catheryn Orourke
Elizabeth Orser-Cataldi and Richard Orser*
Marilyn Oshiro*
Ellen Otto
Tracy and Ty Ouellette*
Karina R. Ousterhout
Nancy Ozard*
Carmel Pacheteau*
Karen Page
Pat and Mauricio Pages*
Garry, Christine and Hailey Pallister*
Stephanie Palos
David Panelli
Donna Panico*
Edward G. Paolo
Aren Parisi
Sally E. Park
Soo Park
Barbara Parkening
Peggy Parks*
Paulette Parmley
Roberta Paskos
Julie S. Pastel
Carol Patrick
Ms. Patricia A. Patterson
Gloria Patton
Mr. James J. Patton
Paul Hobbs Wines
Robert and Patricia Paul*
Dennis Payne
Ms. Mercedes Paz*
Michelle Peacock
Lorraine Pehoushek

Five or more years of consecutive giving. If you recognize an error or omission in this listing, please accept our sincerest apologies and feel welcome to contact us at 415.289.7335 or give@tmmc.org.



Our Donors

32

Mr. Tom Pellenwessel
Jane Pepe*
Doug Perrine
Mark and Alice Perry
Geoffrey Peters*
Charles and Nancy Peterson
Cynthia Pett Dante*
Nancy Pettengill*
Nancy A. Petty
Kathy and Bob Petty
Regina Phelps
Cris Phillips
Damon Phillips*
Rudy and Patricia Phillips*
Alexandra and Sean Piazza
Mr. and Mrs. Robert M. Picker*
Jean E. Pickering and Suzanne Kehde*
Margaret R. Pico
Carol and Antonio Pimentel*
Michelle and Chris Pitt*
Mr. Michael J. Piuze
Angie Plambeck
Ms. Susan K. Plath*
Judy Polatchek
Jaume Pons
Barbara Poppe
Oscar Porter*
Mr. Doug Post*
Robert Powell
Beth and Ted Powers-Johnson
Dr. Roy Y. Powlan
Susan Prell*
Ms. Patricia M. Prenter*
Rita and Michael Press*
Christina Prestella
Lauretta Prestera*
Barbara Price*
Jeffrey Price*
Frances Primofiore
Mark Pritzen*
Mrs. Alyce Proctor*
Paul Proett
Rebecca Prosser*
Stefanie Pryor
Ms. Laurel Przybylski
Ms. Laura Putnam
Annabelle Quan*
Dr. Nigel W. T. Quinn
Thomas Quinn
Ms. Melinda Ramm and Mr. Ridge Patton*
Ms. Joan E. Ranallo*
Frank Randazzo
Marjorie Randolph
Mark Randolph
Mr. Pradeep R. Rao
Harry Rasmussen*
Gordon R. Ray
Susan Ray
Mr. Thomas S. Reavely*
Dr. Diana Rebman
Giampiero Recco
Alex Reid and Gretchen Schaffner*

Katherine Reilly and Mr. Phil H. Reilly
Colleen Rein
Carol Reinhardt and David Redfean*
David Reinhardt
Vickie Renbarger
Mark Renneker, M.D.*
Ernest and Jean Renzel*
Ms. Nancy Reseigh
Amy Resop
Jeanette Rheinhardt*
Dianna Rice
Linda and Bruce Richardson*
Tanya Richardson*
Ms. Laurose Richter*
Sam H. Ridgway*
Jean Rieke and Patrick Maguire
Douglas Rigg
Craig M. Ring and Jane H. Hartwell
Marci Ring
Ms. Jennifer Rios*
Julie and Michael Risenhoover*
Michael Ritter and Karen E. Ritter
Bradley and Malinda Ritts*
Laura Roberts
Mary Roberts
Mrs. Heather Robertson
Dr. Jacqueline L. Robertson
Patricia Robertson*
Anne M. Robinson and Jeffrey S. Robinson
Eddie Robinson
Ginger Robinson
Ina Robinson*
Marilyn Robinson
Rita and Tom Robinson*
Colonel and Mrs. William Robison, USAF (Ret)
James M. and Louise C. Roche Foundation
Heather Rock*
Robin and Christopher Rodi*
Elizabeth Rodis-Jamero
Ms. Debra Rogers*
Caleb A. Rogovin
Mr. and Mrs. Thomas Rohlen
Paula Roloff*
Dale Rose and Carol Rose
Debra Rose*
Carol Rosenberg
Jonathan and Carole Rosenberg*
Joyce Rosenberg
Lisa Rosenfield
Mr. and Mrs. Larry Rosenstein
Mr. Anton Rosenthal*
Alyson and Cecil Rossi*
Michael V. Roth
Patricia Roth*
Lenore M. Rowan
Mr. and Mrs. Rodney R. Rozman
Judy Rubin
Allen and Cynthia Ruby
Grace Ruggiero and Dr. Ronald J. Ruggiero*
Mr. and Mrs. Nile R. Runge*
Cathy Rupert
Matt Russell

Donor Highlight: Corporate Volunteer Days

Corporate partners provide critical financial support for The Marine Mammal Center's mission. Many of these partners take their commitment a step further by bringing their employees to our hospital to learn about our work firsthand. During this unique team-building opportunity, small groups of volunteers help with tasks related to our patients' recovery.



We thank the following partners for their hands-on support during Corporate Volunteer Days in 2014:

- Allianz Global Investors
- Clif Bar
- Demandforce
- Digitas Health LifeBrands
- Ernst & Young
- G2 Insurance Services
- Hall Capital Partners
- Levi Strauss & Co.
- Oracle
- PG&E
- Pacific Foundation Services
- Salesforce
- Wells Fargo

For more information on becoming a Corporate Partner, please contact us 415.289.7335 or give@tmmc.org

SilverHawk Russi*
 Carina Ryan*
 Justin Ryan
 Ms. Tina M. Salandra*
 Tina and David Saling*
 Kathryn Salter*
 Eric and Lorena Saltmarsh*
 Daniel Saltz
 Florinda Sanchez
 Sand Dollar Thrift Store
 Dr. Jessie M. Sanders
 Kevin Saretzky
 Helen Sattelmayer
 Shannon Savage
 Sharon Savatski*
 Thomas A. Savignano*
 Mr. Frank Scafani*
 John and Betsy Scarborough*
 Margaret Schadt*
 Steven Schaefer*
 Werner Schaefer
 Michael Scharfenstein*
 Katharina Scharruhn*
 Shirley Scheck*
 Lucinda Scheer
 Peter Schick*
 David Schiff
 Angela and Sam Schillace
 Sandra Schlickman
 Ms. Arlette Schlitt-Gerson
 Gail E. Schlueck*
 John Schmelzer
 Marcia and Nathaniel Schmelzer*
 John Schmiedel*
 Jeanette Schneider
 Nancy Schoellkopf*
 Diana P. Scholle*
 Charlotte Scholz*
 Robert and Patricia Schrot*
 Mark and Kim Schultz
 Ms. Rebecca Lynn Schumann
 Larry Schwankl and Carol Frate
 Michelle Schwartz*
 Phyllis B. Schwartz*
 Diane Schwarz
 Hans Schwarz
 Stephanie Schwarz
 Christine Scott*
 Mr. David Scott*
 Nancy Scott-Ince
 Janet and Charles Seim*
 Adam Selvin
 Christopher Senn*
 Mary Severson*
 Joyce Seymour*
 Janine Shafer
 Pat and Merrill Shanks*
 Catherine Sharpe
 Nora and Edward Shaw
 Albert and Alexandria Shen
 Robert Sherman*

Jennifer Sherrill
 Stephen A. Sherwin, M.D.
 William Shewry*
 Christine Shields*
 John and Paige Shields
 Mary Shimek*
 Jeffrey and Gretchen Shopoff
 Vicki and Dave Shreiner*
 Leonard Shustek*
 Veronique Laband Siggins and Peter Siggins
 Dzidra Silver*
 Roxanne Silver
 Katherine Simmonds
 Laura Simmons*
 Julie Simons*
 Josh Simpson
 Dr. Patricia Simpson and Radah Butler
 Tracey and Bob Simpson*
 Mrs. Lyn Sinko*
 Tara and Frances Skeen*
 Mary Jane Slater
 Alexandra Smith
 Ms. Frances B. Smith*
 Mr. Ian D. Smith*
 James and Wreatha Smith*
 Maureen Smith
 Michael Smith
 Marcia Smythe*
 William Snell*
 Birgit Snider*
 Tomoko and Daniel Snyder
 Archie Soden*
 Scott & Carol Sokol
 Magda Soley*
 Ken and Diana Sopjes
 Chanell Sourp
 Mary G. Souza
 Mary L. Spadaro
 Dianne and Bruce Spaulding*
 Jacqueline and David Spielberg*
 David and Donna Spilman
 Clark and Michele Spink*
 Trevor R. Spradlin
 Gary Spratling*
 Craig and Jane Spriggs*
 Mae Stadler*
 Kevin Stampfl
 Lloyd Stark
 Kevin Starr
 Alice Stauffer
 Henry Stauffer*
 Janecke and Peter Stauffer/The David
 P. Wheatland Charitable Trust
 Kathleen Stecko
 Carla and Charles Stedwell
 Michael Steele
 Sara Steelman*
 Mirella Stefan
 Sebastian Stein
 Marc Steinberg and Maria Day
 Michael Stelljes

Charles Stengel
 Linda and Donald Stephens*
 Nancy Stephens
 Jo Ann and Edward Stepien
 Rhom Stone*
 Chris Storm
 Rebecca Story
 Douglas and Bobbie Lee Strader
 Karen L. Strand
 Ms. Deborah W. Stratmann
 Jane and Duane Stratton
 Ms. Olivia Byers Straus*
 Patricia and Marc Strohleim*
 Robert Strouse*
 Elizabeth Struve
 Janet Sugihara
 Jacqueline Suitt*
 Cathy Sulinski
 Jane Sullivan*
 Miss Linda J. Sullivan
 Michael Sullivan
 Margaret and Peter Sullivan
 Theresa Sullivan*
 Mr. John B. Sulzycki
 Steven Sumnick*
 Sheri Sun
 Della M. Swanger*
 Gail Swarbrick*
 Barbara and Cyrus Sweet*
 Irene Szente
 Elizabeth Taft*
 Valerie Talmage*
 Kit Tang
 Lesley Tannahill
 Frank Taplin
 John Taylor
 Ms. Shirley R. Taylor
 Ms. Dorothy E. Tchelistcheff*
 Mr. and Mrs. Robert Tecco*
 Judith Teitler
 Mira Terdiman
 Mr. Anthony Teresa*
 Donald and Traci Terluin*
 Eugene and Patricia Thiers*
 Ms. Pamela Thistlethwaite
 Mr. Glenn Thomas and
 Ms. Kimberlyn J. Kleasen*
 Megan Thomas*
 Ms. Patricia Thomas and Mr. Scott Atthowe
 Tamyra Thomas*
 Bill and Nona Thomas*
 Jessica Thomaston
 Barbara and Norman Thompson*
 Ruth and David Thompson
 Kimberly Thompson
 Patsy Thompson*
 Mr. and Mrs. Roderick M. Thompson
 Harry and Molly Thorpe*
 Bill D. Thy and Sally L. Myers
 Terri Tienken*
 Marissa and Daniel Timm

Mrs. Carine Tintinger
 Mr. and Mrs. James and Andrea Tittle*
 Mr. William Toaspers*
 Jenee L. Todd*
 Joy Tomlinson
 Ms. Elizabeth Torres
 Elizabeth Touma
 Thomas P. Trimble
 Mary Trumble*
 Cooper, Griffin and Mason Tunney
 Marla and Gregory Turek*
 Barbara and Donald Turnbull*
 Janet and Peter Turnbull*
 Mary Turner*
 Mr. and Mrs. Thomas C. Twist
 Wes and Stephanie Tydlaska*
 Dean and Bertha Tyler*
 Ms. Leslie R. Tyler and Mr. Lawrence J. Less*
 Mr. Barry Ulrich
 Alice Underwood
 Sloan and Priscilla Upton
 Ann Ure
 Lori Vadnais
 Christine Valentini
 Bruce and Grace Valentine
 Janet Van Auken*
 Karen and Robert Van Duinen*
 Jeanette Vandenberg
 Frits and Letty VanderLinden*
 Johanna Vandermolen
 Dr. William and Jennifer Vandivier
 Mary Ann Vasconcellos*
 Ms. Noemi Vazquez
 Charles Vellone
 Ellen Ann Venton*
 Silvio Verbis
 Kay Vernor*
 Karen Verrico
 James Vestal*
 Keith and Margaret Vickers*
 Mr. and Mrs. Marc B. Victor*
 Celia Vigil
 Lise Vilas
 Allison Vitsky
 Nancy Vlassis*
 Rainer and Marianne Wachalovsky*
 Diane Wagner and Grant Wagner
 Rosemary Wakeham
 Vernon Wakeland
 Robin Wakshull and Dennis Rutkin*
 Anne-Marie and David Walker
 Ms. Deborah Walker*
 Debra Walker
 Mark and Joyce Walker*
 Debby and John Walter*
 Ms. Mary Wand*
 Mrs. Arlene Wasserman*
 David Wasshausen Family
 Dieter and Merrilee Wasshausen
 Ms. Carol Watson
 Sheila Watt

***Five or more years of consecutive giving.** If you recognize an error or omission in this listing, please accept our sincerest apologies and feel welcome to contact us at 415.289.7335 or give@tmcc.org.



Our Donors

34

Madeline Weaver*
Charles Wegerle
Sara and Gary Weichert*
Alice Weigel*
Elaine J. Weihman
Ms. Hillary Weingast and Mr. Jeff Hyman*
Robert Weisblatt*
Claudia Welker
Harriet Welsh*
Virginia Welsh
Aletha Werson*
Warren Wertheimer*
Ms. Jacqueline Whelan*
Connie M. White*
Helen White*
Mani White*
Mary Ellen White and Jack Morton
Ceil Astin Whitney*
Barbara Whittle*
Judy Wilbur
Edmund Wilkinson
Nancy L. Wilkinson
Alicia and Amanda Williams
George Williams
Stephanie and Ben Williams
Stephen Williams*
Tim Williams
Alana Willroth
Diane Wilsey*
Dr. Brian Wilson and Mrs. Patricia D. Wilson
David Wilson*
Martha and Glen Wilson*
Grace and Rowan Wilson*
Shannon Wilson and Janine Guillot*
Jennifer Winship
Ann Wise
Catherine V. Woldow*
Carol Wolf*
Ms. Michele Wolfenstein
Dr. Brett Wolff
Houston Wong
Jo Woodison
Jane and Dean Woodman
Catherine Woods*
Barbara and John Woods
Rachael Woods
Jeffrey Woolford*
George Work*
L. A. Wurt*
Ms. Erica Wuthnow
Deborah Wyatt*
Eugenie R. Yaryan*
Dr. Kenneth Yates
Lucia Young
Jerlynn Young and Derrick Jensen*
William E. Younis
Michelle Yovanovich
Ms. Tanja Zabka
Martin and Margaret Zankel
Stacy Zapko
Barbara Zarebinski*

Howard Zee*
Ms. Julia Zhabina
Ms. Kim L. Zigal*
Ms. Jane Zuercher
Ms. Jean Zukin*
Audrey Zwerle*

Ke Kai Ola Donors

We gratefully acknowledge these gifts received in 2014.

\$25,000+

Disney Conservation Fund
George F. Jewett Foundation
John G. Shedd Aquarium

\$10,000 - \$24,999

Anonymous
Horne Family Foundation
Catherine M. Kruttschnitt
Marisla Foundation
Robert and Carol Momsen
Nancy and Gregory Wilson

\$1,000 - \$9,999

Anonymous
Eric Anderson and Roger Beck
Patricia and Peter Arrigoni
Bay Area AAZK
Barbara and David Beasley
Dr. Deborah D. Cupal
Cyanotech Corporation
Four Seasons Resort at Hualalai
Shirley and Lee Griffey - Griffey Family Fund
Betsy Jewett and Rick Gill
Cheryl Lewis
Mary and Tom Piller

\$250 - \$999

Anonymous
Duane and Marjorie Erway
Kristin Hermanson
Cynthia Kendall
Joan Lamont
Ingrid Overgard and Steven Ginsberg
Kim Rogers
Kristin Vidovich
Elizabeth Weinhold
ZNA Communications

BEQUESTS

\$100,000+

Marjorie K. Balazs 2000 Unitrust
Diane Lorraine Baldwin Revocable
Intervivos Trust
Estate of Maria Berry
Barbara J. Harootunian
Revocable Living Trust
S. Grace Williams Trust

\$10,000 - \$99,999

The Lawrence Lee Bath Living Trust
Ruth E. Benzing Revocable Trust
Trust of James Richard Boyce and
Kristin Lee Otis
Dovre Busch Living Trust
Trust of Laurence H. Dorcy
Eleanor Gray Knudson Trust
Anna Krueger Revocable Intervivos Trust
Trust of John V. Sudall
The Miep Van Buitenen Living Trust
The Kerstin Wallerstedt Trust

\$1,000 - \$9,999

The Donald R. Brewer and
Lois Lee Brewer Revocable Trust
The Edward Drozynski, Jr. Trust
The Estupinian Family Trust
Estate of Jean R. Grandfield
June D. Hammack Revocable Trust
Estate of Anna V. King
MacDonald Family Trust
Julie C. Maier Estate
Randall Sanger Trust
The Tuma Family Trust
Estate of Jeannette L. Widom

\$50 - \$999

The Gary Curtis Newport Estate
Estate of Mildred Lillis
Estate of Elaine B. Smith

ENDOWMENTS

Geoffrey C. Hughes
Foundation Endowment Fund
Shirley Ann Spencer Fund for
The Marine Mammal Center

STELLER CIRCLE

We gratefully acknowledge the donors who have joined our Steller Circle as of June 30, 2015.

Anonymous (6)
Viki Adam
Lawrence Adams
Liana Genovesi and Scott Ahrendt
Mary Allen
Dale Anania
Lucinda Anskin
Helga Ashkenaze
Mary Bachman and William Downing
Doreen Baleria
Juliana Barr
Mary Barr
Sandra Barth
Barbara and David Beasley
Rita Foegal Bell
Sheri and Robert Bell
Cynthia Benner

Paul and Mildred Berg
Lauren and John Black
Jeanne Bobbitt
Gordon Boone
Kerry Boyd
Lynne and Dave Briscoe
Vi Brown
Waltraud and Michael Buckland
Richard and Christy Burke
Lou Ella Burmeister
Susan Burns
Barbara Busch
Mariateresa Canosa
Robert Caradien
Caryl Carr and David Presotto
Karen Carr
Maria E. Carrasco
John Catts and Sheila Roebuck
Joan Christenberry
Rebecca and David Conant
Mr. Charles Condy
Gale Connolly
David Coulson
Elena and Arthur Court
Mr. and Mrs. Paul Crain
Hazel J. Crane
Sharon Culp
Sue and Daniel Curran
John De Crell
Jerry Dean
Lee Desta
Lyla A. Devita and Marguerite Donaldson
Diane Diggins
Tim Dimacchia
Elizabeth O. Dohrmann
Ann Domm
George and Laura Dora
Margaret Downing
Lyn Carol Dunn
Constance Edwards
Veronica Espada
Heather A. Evans
Frances Ezer
Margaret Louise Falk
Judy Feil
Chuck and Pat Finney
Mitchell Fong and Denise Walsh
Cathy Fox
Deborah Gabris
Marian Gallerani
Carol Gamble
Shirley J. Garver
Andrew Geiser
Cheryl and Derlin German
Arlette and Nick Gerson
Ms. Loretta M. Giorgi
Lawrence Goldyn and Ronald N. Campbell
Suzanne Golt
Barbara Goodwin
Gitta Grabowski
Susan Gray

Donor Highlight: Steller Circle

To make a gift of any kind to The Marine Mammal Center is an act of generosity. To make a long-term gift—one derived from the work of a lifetime—is to make a commitment beyond measure.

The Steller Circle recognizes and honors donors who have chosen to include the Center in their estate plans.

“As a long-time supporter and volunteer at The Marine Mammal Center, including the organization in my estate plans just made sense.



My legacy gift will allow the Center’s life-saving work to carry on when I’m gone—and that means a lot to me.”

Michele Hunnewell

Steller Circle member since 2011

Lynn Griffin
Harry Haines
Jacki Hardy
Hildegard Harris
George Harter
Jacqueline and Eugene Haunch
Virginia Hawley
Paul Herbst
Sally Holt
Catherine Hoss
Michele and Bill Hunnewell
Jamie Jaffee
Mary and Robert Jenkin
Stan Jensen
Ms. Emi Jobling
Anna-Kajs Johnson
Camille L. Johnson
Marcine M. Johnson, Ph.D.
Ms. Mary Jope
Doreen Judson
Cindy Kaye
Pauline Kayes
Mr. and Mrs. Lloyd Kendall
Michael Kleeman
Suzanne and Jerry Knecht
Antoinette and Stephen Krajcar
Ilona Kratz
Ann Kugel
Gary Kwan
Julia Lams
Carmen M. Lasar
Meredith Lattin, LCSW
Catherine and Collin Lau
Barbara Legler
Nancy Lenzer
Douglas Levison
Ms. Ruth Levitan
Louise Lewis
Charles and Sharon Lindner
Teri Loveland
Jeanne Lucenti
Carma Luskin
Cinnie and Merrill Magowan
Mr. Andre Malouf
Peter and Amy Mangarella
Rose Markowitz
Ms. Virginia Marques
Greg Martin
Jorie B. McCarthy
Celeste McConnach
Joseph McCrane
Eileen Metzger
Loraine Meyer
Agnes M. Miller
Patricia Minnick
Gary and Gloria Modrell
Jennifer Murer
Gertrude Musey
Sharon Neiman
Gloria Nelson
Janet Nelson

Donald J. Nolan
Joyce and Mohsen Noori
Jill North
Priscilla Palomino
Jamie Pardau
Jeanne Pauley
Rita Peters
Jayne Phelps
Mr. Donald E. Pringle
Mr. Kevin Rabe
Robert and Vicki Rawlings
Bonnie and Laurence Rhodes
Ms. Jennifer Rios
Steven Russ
Margaret Schadt
Ruth Schlossberg
James Schollard
Janine Shafer
Susan Shapiro
Suki Shepard
Sylvia Siegel
Nancy and Phil Sikora
Anna and Donald Slawsky
Kim Smith
Sandra Stauffer
Linda and Joe Stockhus
Eric Strand
Patricia and Alan Tai
Beverly Tanner and Jerry Herman
Jan Taradash
Scott and Patricia Teaford
Ms. Deborah Tencza
Terri Tienken
Mr. and Mrs. Donald Tornberg
Dana Van Eperen
Kate and Richard Vance
Mr. and Mrs. Jackson Vandebross, Jr.
Linda and Terry Vetter
Shirley and Herman Victor
Jennifer and John Vogel
Jeff and Dana Wagner
Lee and Bill Webber
Donald West
Jan Widdowson
Stephanie and Kim Wigton
Stephen Williams
Jane Williamson
Bob Wilson
Barbara Woodhill
Gary York
Martin and Birdie Zitnick

MEMORIAL GIFTS

We respectfully recognize special gifts received in memory of these family members & friends:

Gary M. Allums
Amy
Heidi Beth Boble
Joy Boehm
Barbara Champion



The Marine
Mammal Center.

● ***Five or more years of consecutive giving.** If you recognize an error or omission in this listing, please accept our sincerest apologies and feel welcome to contact us at 415.289.7335 or give@tmnc.org.

Our Donors

36

Deborah
Jim Doeppers
Barbara E. Fritz
Frank Griffith
Marnie E. Guttuso
Carol Hasting
Richard "Dick" Holm
Jessica Holmes
Mark Johnson
Adella R. Jones
Roberta Kim
William "Bill" Klein
Mike Lewis
Carol Lies
Little D
Sir John Martin and
Lady Rosemary Ann Martin
Jerry Mecabe
Dorothy Miller
Marti Morec
Egil Okstad
Dorothee Perloff
Donald Patrick Perrott
Coll Gordon Perske
Mildred "Mickey" Peterson
Rocci Pisano
Dr. Nthethe Raditopole
Leanne B. Roberts
Jacqueline Robertson
Lori Singley
Roger and Ann Skjei
Nancy Stevens
Phil Sun
Stan Teitler
Vanilla Bean
Jenny Wren Watkins
Patricia "Patsy" Evans Weiss
Ian Wohleb
Pearl and Harvey Woodruff
Alan Young

TRIBUTE GIFTS

We respectfully recognize special gifts received in honor of these family members & friends:

Janet Aldrich
Andon
Arrow
Kedhar Bartlett
Barbara Beasley
Stacy Bezyack
Andrea Bloom
Lolly and John Burke
Iris Collins
Marion Cope
Noel Da
Danny
Mary Darin Cline
Asta, Bob, Andrius, Daina & Lukas Estas
Mitch Fong

Bianca and Mazalit Glaubach
Florence and Steven Goldby
Hannah Hayes
Sue Hawley
Doug Heneke
Hoppie
Lee Jackrel
Stan Jensen
Linda Johnson
Luci Karp
Cindy Kaye
Colleen Kelly
Nick Labeledz
William and Martha Larkin
Karen Larsen
Malia Louie
Merrill Magowan
Karen Johnson McKewan and Tom McKewan
Kelly McWilliams
Michelle and Peter
Bill Mullen
Mark Osten
Tammy and James Patton
Michael D. Price
Barbara Rambo
Justin Ray
James Peter Read
Rusty Rosenberg
Bonnie Ricca
Sue & Ron Sawade
James Scott
Philip and Jean Warren
Jennifer Weller
Matt Williams and Hilary Hibel
Heather Willis
Vivian Wright

CORPORATIONS, FOUNDATIONS & ORGANIZATIONS

\$200,000+
Procter & Gamble

\$100,000-\$199,999
National Marine Fisheries Service /
National Oceanic and Atmospheric
Administration
Pacific Gas & Electric Company

\$50,000 - \$99,999
Anonymous
DMARLOU Foundation
Thelma Doelger Trust for Animals
Koret Foundation
Laurel Foundation
Oracle Corporate Giving Programs

\$25,000 - \$49,999
The Argus Fund
Herbert and Diane Bischoff Foundation
Disney Conservation Fund

George F. Jewett Foundation
The Kimball Foundation
The Sato Foundation
Union Bank
Wells Fargo Foundation
The Dean Witter Foundation

\$15,000 - \$24,999

The Atmos Foundation
Berglund Family Foundation
Coypu Foundation
Thelma Doelger Charitable Trust
Ann and Gordon Getty Foundation
Marisla Foundation
The Bernard Osher Foundation
Dr. Scholl Foundation

\$10,000 - \$14,999

The Bank of America Charitable Foundation
Hayward Family Foundation
Horne Family Foundation
Donald Lee and Sally Steadman Lucas
Foundation
Union Bank of California Foundation
Weyerhaeuser Family Foundation

\$5,000 - \$9,999

Anonymous (2)
American International Group
Bay Area AAZK
DigitasHealth LifeBrands
Ernst & Young LLP
The Ginn Family Foundation
The David B. Gold Foundation
Lisa & Douglas Goldman Fund
Intuit Demandforce
The JEC Foundation
Morro Bay Marine Rehabilitation Center
Quadra Foundation
Santa Cruz Seaside Company
Sausalito Art Festival Foundation
Wags & Menace Make a
Difference Foundation
Wilmington Trust Company

\$1,500 - \$4,999

Anonymous
Allianz Global Investors
Aveda Corporation
Community Thrift Store
Evim Foundation
The Good Night Foundation
The Herbst Foundation, Inc.
The Edith and Herbert Lehman
Foundation, Inc.
Levi Strauss & Co.
Orrick, Herrington & Sutcliffe LLP
The See Foundation
Sidney Stern Memorial Trust
Sunshine Polka-Dot Foundation
Swirl

The Patty and Jack Wright Foundation
Truettner Family Foundation
Vasicek Foundation
Walter & Elise Haas Fund

MATCHING GIFT & WORKPLACE GIVING ORGANIZATIONS

Abbott Laboratories (Abbott Fund/AbbVie)
Adobe Matching Gift Program
Advent Employee Matching Gifts Fund
Agilent Technologies Foundation
AIG Matching Grants Program
Allstate Giving Campaign
Altria Group, Inc.
American Endowment Foundation
American Express Company Employee
Giving
Amgen Foundation
Apache Corporation
Apple Matching Gift Program
ARM, Inc.
AT&T United Way Employee Giving
Campaign
Autodesk Foundation Employee
Engagement Fund
Bank of America Matching Gifts Program
Bank of America United Way Campaign
Bank of The West
BHP Billiton
BlackRock
BNY Mellon Community Partnership
The Boeing Company
BP Foundation, Inc.
Bristol-Myers Squibb
Brookfield Investment Management Inc.
CA, Inc.
Capital Group Companies
Charles Schwab
Chevron Humankind Employee Funds
City of Seattle
The Clorox Company Foundation
Community Health Charities
Community Shares
Covidien Employee Giving
S. H. Cowell Foundation
Dolby Match Program
eBay Foundation
Esurance Inc.
Expedia
ExxonMobil Foundation
FM Global Foundation
Follett Corporation-Matching Gift Program
Franklin Templeton Investments
Freeport-McMoRan Foundation
The Arthur J. Gallagher Foundation
The Gap Foundation
Gap Inc. | Be What's Possible
Gartner Matching Gift Center
GE Foundation
GEICO

Gerson Bakar & Associates
 GlaxoSmithKline Foundation
 Goldman Sachs & Co Matching Gift Program
 Google
 Hewlett Packard Company -
 Employee Giving Program
 Highfields Capital Management LP
 IBM Corporation Matching Grants Program
 IBM Employee Services Center
 IBM International Foundation
 Illinois Tool Works Foundation
 Integra Employee Benefit
 Insurance Services LLC
 International Incorporated
 JK Group Trustee for CA, Inc.
 Johnson & Johnson Matching Gifts Program
 The JP Morgan Chase & Co
 Justgive.org
 Kaiser Permanente Community Giving
 Campaign
 Lam Research Employee Gift Match Program
 Lawrence Livermore Lab - UC
 Levi Strauss Foundation
 LMEPAC
 Local Independent Charities of America
 Macy's Inc. Matching Gift Program
 Matson Foundation
 Max Machinery Inc.
 McKesson Foundation, Inc.
 Medtronic
 Microsoft Giving Campaign Program
 Mile High United Way
 Millenium Matching Gifts
 Mizuho
 Morgan Stanley
 National Football League
 Daniel Nikkel
 Nuveen Investments, LLC
 NVIDIA
 Oracle Corporation Matching Gifts
 Pfizer Foundation
 PG&E Corporation Foundation Matching Gifts
 Qualcomm Inc.
 Reynolds American Foundation
 Roll Giving
 Rovi Solutions Corporation
 Salesforce.com Foundation
 The San Francisco Foundation
 SanDisk
 Charles and Helen Schwab Foundation
 Shell Oil Company Foundation Matching Gifts
 Silicon Valley Community Foundation
 The Sobrato Organization
 SSL, LLC.
 T. Rowe Price Foundation, Inc.
 TDCGroup
 Texas Pacific Group
 Textron
 The Brainerd Foundation
 Travelers Community Connection Trust
 UBS Foundation USA Matching Gift Program

Union Bank
 United Airlines
 United Technologies Corp.
 United Way California Capital Region
 United Way of Central New Mexico
 United Way of Greater Richmond & Petersburg
 United Way of San Diego County
 United Way Of The Bay Area
 United Way of the Capital Region (PA)
 US Bank Foundation
 Vanguard Matching Gift Program
 Ventana Employee Giving Program
 Verizon Foundation
 VISA Givingstation
 VMware Foundation
 Walt Disney Company Foundation
 Wells Fargo Community Support Campaign
 Yahoo!
 Zynga

DONATIONS OF IN-KIND PRODUCTS & SERVICES

Value of \$250,000+

Swirl

Value of \$25,000 to \$249,999

Mr. Larry Bowman
 Double Forte
 Google
 Pacific Heights Dry Cleaners

Value of \$10,000 to \$24,999

Aquarium of the Bay
 Heitz Wine Cellars
 KTVU-TV
 Matthew Naythons
 Orrick, Herrington & Sutcliffe LLP

Value of \$5,000 to \$9,999

Animal Eye Care
 Econscious
 KFOG
 Marin Independent Journal
 Marshall Arts
 Patagonia, San Francisco
 SNP Communications
 Summit Medical Products

Value of \$2,500 to \$4,999

Helene and Alan White
 Four Seasons Resort at Hualalai
 Dr. Joseph Geraci
 Steven and Laurie Holmstrom
 SF Mercantile

Value of \$1,000 to \$2,499

AnimalScan
 Arthur Court Designs
 Jon and Melissa Becker
 Clif Bar

Cloud Star Corporation
 Patrick Flynn
 Hog Island Oyster Company
 Lagunitas Brewing Company
 R. + C. Moreland
 William Muraoka and Pat Quinn-Muraoka
 Revolution Foods
 Smith and Nephew
 Toss Designs Inc.

Value of \$500 to \$999

Asics America Corporation
 Dan Carmell
 'Elizabeth Chapman
 EO Products
 Lydia Hess Illustration & Design
 Mancini's Sleepworld, Novato
 Monterey Bay Aquarium
 National Holistic Institute
 Suzanne Romanowicz
 Whole Foods Market, Miller Ave.
 Whole Foods Market Monterey

Value of \$250 to \$499

Cary Adriatico
 Jeff Boehm and Keith Rosenthal
 Jody Gibney
 'Bridget Herman
 NovaBay Pharmaceuticals, Inc.
 Planet Granite
 Kelli Radcliffe
 Linda Roshon-Harville
 San Francisco Whale Tours
 Sausalito Picture Framing

2014 RUN FOR THE SEALS

Corporate Sponsors

Aveda
 Bank of America
 Marin Sanitary Service
 Union Bank

Prize & In-Kind Sponsors

Aquarium of the Bay
 Asics
 Blue Dog Bakery
 Clif Bar
 Cloud Star
 Dawn
 Econscious
 FoodMaxx
 Hubert's Lemonade
 KTVU
 Marin Sanitary Service
 Marshall Arts
 Mountain Hardware
 Mutt Mitt
 Nova Rosti Coffee Company
 Pacific Heights Cleaners
 Pasta Pomodoro

Pirate's Booty
 Revolution Foods
 Swirl
 TerraCycle
 Wellness Natural Food for Pets
 Whole Foods Market, San Rafael

Individuals that Raised or Gave \$1,000+

Lisa Burkett
 Jim and Evelyn Chumbley
 Lisa Cooke
 Judith Currie
 Bianca Glaubach
 Mazalit Glaubach
 Miriam Glaubach
 Shulamit Glaubach
 Michael Hanrahan
 Keith Rosenthal

Teams that Raised \$1,000+

Team in Memory of Alan Young
 Glaubach
 Kotick's Crusaders
 Midnight Mermaids
 Pinnipedders
 Six Flags Discovery Kingdom
 Team Oakland Zoo
 team sophie-dog
 Tobie and the HemShows
 Wed Nite Sealed with a Fish
 Zephyr Zeal

2014 BODEGA BAY COMMUNITY RELEASE SPONSORS

Bodega Bay Lodge & Spa
 Bodega Bay Sailing Adventures
 Bodega Bay Veterinary Hospital
 Business Services Unlimited
 Candy & Kites
 Eclectic Amanda
 Fort Ross Vineyard & Winery
 Gourmet au Bay
 Jean Warren Watercolors
 The Links at Bodega Harbour
 Occidental Hotel
 Osmosis Day Spa Sanctuary
 Second Wind
 Sonoma Concierge

*Five or more years of consecutive giving. If you recognize an error or omission in this listing, please accept our sincerest apologies and feel welcome to contact us at 415.289.7335 or give@tmnc.org.



Board of Directors

38

Pat Callahan

Senior Executive Vice President,
Chief Administrative Officer
Wells Fargo Bank

Phil Carpenter

Senior Partner, West Coast
Allison+Partners

Elaine Genevro

Executive Vice President, Regional President
Union Bank

Susan Grau

Civic Leader

Betty Hasler

Board Secretary
Managing Director
Diversified Search

W. C. "Dub" Hay

Retired Coffee Executive

Beth Inadomi

Principal
The Podesta Group

Karen Johnson-McKewan

Immediate Past Chair
Managing Partner
Orrick, Herrington & Sutcliffe LLP

Michael Kleeman

Entrepreneur/Lecturer
University of California, San Diego

Elizabeth Knier

Financial Advisor
Edward Jones

Chris Lundquist

CEO/President
LCI Bankruptcy Management Solutions

Merrill L. Magowan

Board Chair
Co-Founder
San Francisco Sentry Investment Group

Cecily Majerus

Board Vice Chair
Civic Leader

Glen Mathison

Vice President, Executive Communications
Charles Schwab & Company, Inc.

Mark McKee

President
Capital Alternatives

Lisa Pantages

Vice President of Finance
San Francisco Giants

Martin Richards

EVP and U.S. Head of Middle Market Banking
HSBC

Matt Rogers

Director (Senior Partner)
McKinsey & Company

John Simon

Senior Vice President Human Resources
PG&E

Sandor Straus

Board Treasurer
Managing Director
Tigmera, LLC

Phil Warren

Civic Leader

Jennifer Weller and Andrew Zurn

Volunteer Council Representatives

Executive Director

Jeff Boehm

Directors Emeriti

Mary Bachman
Nancy Colvert
Dennis DeDomenico
Jerry Gibbons
Rev. Douglas Huneke
Joseph Rogers
Peter Stauffer
Beverly Tanner
Robert Wilson
Sheldon Wolfe

Executive Director Emeritus

Peigín Barrett

Scientific Advisors

Sarah Allen, PhD

National Park Service, Point Reyes National Seashore

David Casper, DVM

Long Marine Laboratory, University of California, Santa Cruz

James Harvey, PhD

Moss Landing Marine Laboratories

Dave Jessup, BS, DVM, MPVM, DiplACZM

Wildlife Disease Association

Linda Lowenstine, DVM, PhD, ACVP

Department of Veterinary Pathology,
Microbiology & Immunology, University of California, Davis

Jim McBain, DVM

Veterinary Office, Sea World of California

Melissa Miller, DVM, ACVP

Marine Wildlife Veterinary Care and Research Center, California
Department of Fish and Game

Matthew Naythons, M.D.

Epicenter Communications

Todd Schmidt, DVM

Veterinary Office, Sea World of California

Tom Williams, DVM

Monterey Bay Aquarium

Financial Summary

Statement of Financial Position as of September 30, 2014

Assets

Cash	\$5,738,961
Contributions receivable	\$1,614,973
Investments at market	\$1,479,824
Inventories	\$86,142
Equipment and structures	\$28,398,143
Deposits and prepaid expenses	\$140,944
Total Assets	\$37,458,987

Liabilities

Accounts payable and accrued liabilities	\$909,838
Total Liabilities	\$909,838

Net Assets

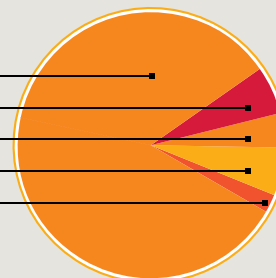
Unrestricted—undesignated	\$30,191,075
Unrestricted—board designated	\$5,018,648
Temporarily restricted	\$714,312
Permanently restricted	\$625,114
Total Net Assets	\$36,549,149

Total Liabilities and Net Assets	\$37,458,987
---	---------------------

Statement of Activities for the year ended September 30, 2014

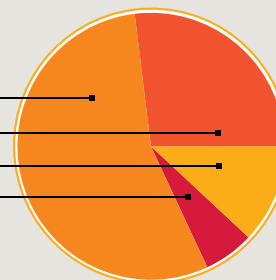
Support and Revenue

Contributions from foundations, corporations, members and individuals ¹	\$9,411,909	82%
Education program fees and retail revenue	\$716,077	6%
Federal, state and local government support	\$492,860	4%
Donated materials and services	\$697,552	6%
Other revenue	\$218,193	2%
Total Support and Revenue	\$11,536,591	100%



Expenses

Veterinary science programs	\$4,564,675	55%
Educational programs	\$2,293,374	27%
Fundraising	\$1,023,618	12%
Supporting services	\$497,455	6%
Total Expenses²	\$8,379,122	100%



Change in Net Assets **\$3,157,469**

(1) Of this total, \$4,280,126 represents bequests from individuals.

(2) Total expenditures include \$1,366,000 of depreciation, primarily from the Sausalito facility.

Audited financial statements for the year ended September 30, 2014, are available at The Marine Mammal Center's administrative office. Please contact Marci Davis, Chief Financial Officer, at davism@tmmc.org or Erica Einhorn, Accounting Manager, at einhorne@tmmc.org.



The Marine
Mammal Center.



The Marine Mammal Center®

2000 Bunker Road
Fort Cronkhite
Sausalito, CA 94965-2619
T 415.289.7325 (SEAL)
F 415.289.7333
MarineMammalCenter.org

Monterey Bay

PO Box 778
Moss Landing, CA 95039
T 831.633.6298
F 831.633.5927

San Luis Obispo

1385 Main St.
Morro Bay, CA 93442
T 805.771.8300
F 805.771.8304

Anchor Bay—Fort Bragg

T 415.289.7325 (SEAL)

Ke Kāi Ola

73-731 Makako Bay Drive
Kailua-Kona, HI 96740
T 808.326.7325 (SEAL)

Make a donation today at MarineMammalCenter.org/donate



The Marine Mammal Center is a proud partner of the Golden Gate National Parks
Our park partners: nps.gov/goga/marin-headlands.htm

The Marine Mammal Center is grateful for the many beautiful images throughout this annual report provided by staff and volunteers including: Rachel Assink, Sean Bogle, Michael Hanrahan, Bill Hunnewell, Stan Jensen, Dina Morrison, Ingrid Overgard, Julie Steelman, Sarah van Schagen, Emily Warchol and Pat Wilson.